

EVERY FIBRE TELLS A STORY

Another year, another fresh chapter.

At Russell, we've always been about innovation, quality and integrity – and we're proud to continue the tradition we began in 1902 for another year and another collection.

Every year we aim to introduce new products that will help you help your customers. Inside you'll find all the details of the latest additions to our range with stories of style and colour – developed to bring even more choice to teamwear.

Every fibre tells a story. We hope you enjoy our collection.



www.russelleurope.com

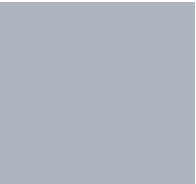
THE RUSSELL RANGE



934F
PolyCotton
Poplin Shirt
See page 29



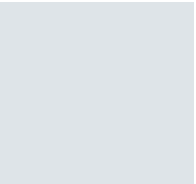
SI SILVER
PANTONE® FABRIC: 17-0000 TPX
PANTONE® PAPER: 877 C
C:0 M:0 Y:0 K:60



S7 SILVER MARL
PANTONE® FABRIC: 15-4101 TPX
PANTONE® PAPER: 429 C
C:32 M:23 Y:18 K:0



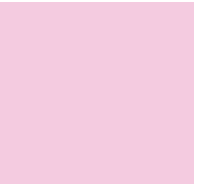
LX LIGHT OXFORD
PANTONE® FABRIC: 14-4002 (MARLED)
PANTONE® PAPER: COOL GREY 3C
C:5 M:0 Y:0 K:40



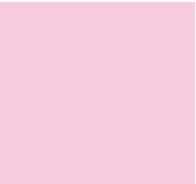
BI BIRCH
PANTONE® FABRIC: MARLED WHITE
PANTONE® PAPER: MARLED WHITE
C:3 M:0 Y:0 K:10



3M KHAKI
PANTONE® FABRIC: 15-1116 TPX
PANTONE® PAPER: 7536 C
C:0 M:10 Y:25 K:28



Y1 CLASSIC PINK
PANTONE® FABRIC: 13-2806 TPX
PANTONE® PAPER: 217 C
C:2 M:24 Y:0 K:0



BN BRIGHT PINK
PANTONE® FABRIC: 14-3209 TC
PANTONE® PAPER: 672 C
C:0 M:25 Y:0 K:0



41 BURGUNDY
PANTONE® FABRIC: 19-1716 TPX
PANTONE® PAPER: 5195 C
C:50 M:100 Y:70 K:45



PT PORT
PANTONE® FABRIC: 19-1726 TPX
PANTONE® PAPER: 7428 C
C:10 M:95 Y:43 K:73



MA MAROON
PANTONE® FABRIC: 19-1627 TPX
PANTONE® PAPER: 504 C
C:70 M:100 Y:90 K:50



CQ CHOCOLATE
PANTONE® FABRIC: 19-0812 TPX
PANTONE® PAPER: 7 C
C:90 M:100 Y:100 K:15



44 ORANGE
PANTONE® FABRIC: 17-1464 TPX
PANTONE® PAPER: 1665 C
C:0 M:77 Y:100 K:0



3C CORAL MARL
PANTONE® FABRIC: 15-1530 TPX
PANTONE® PAPER: 1625 C
C:0 M:46 Y:42 K:0



PD PURE GOLD
PANTONE® FABRIC: 14-1064 TPX
PANTONE® PAPER: 137 C
C:0 M:29 Y:92 K:0



AL APPLE
PANTONE® FABRIC: 15-5534 TPX
PANTONE® PAPER: 348 C
C:95 M:0 Y:92 K:0



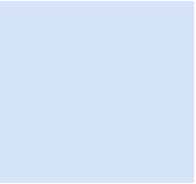
G5 GREEN MARL
PANTONE® FABRIC: 14-0156 TPX
PANTONE® PAPER: 7487 C
C:41 M:0 Y:68 K:0



WL WINTER EMERALD
PANTONE® FABRIC: 17-5034 TPX
PANTONE® PAPER: 569 C
C:100 M:0 Y:50 K:10



65 TURQUOISE
PANTONE® FABRIC: 16-4535 TPX
PANTONE® PAPER: 638 C
C:70 M:0 Y:10 K:0



BZ BRIGHT SKY
PANTONE® FABRIC: 14-4112 TPX
PANTONE® PAPER: 2708 C
C:15 M:5 Y:0 K:0



SC SKY
PANTONE® FABRIC: 15-4020 TPX
PANTONE® PAPER: 651 C
C:48 M:22 Y:0 K:0



42 LIGHT BLUE
PANTONE® FABRIC: 14-4110TPX
PANTONE® PAPER: 2708 C
C:30 M:14 Y:0 K:0



BH BRIGHT ROYAL
PANTONE® FABRIC: 18-3949 TPX
PANTONE® PAPER: 2726 C
C:100 M:70 Y:0 K:5



NA NAVY
PANTONE® FABRIC: 19-4024 TPX
PANTONE® PAPER: 533 C
C:100 M:75 Y:75 K:30



FN FRENCH NAVY
PANTONE® FABRIC: 19-4010 TPX
PANTONE® PAPER: 532 C
C:100 M:85 Y:35 K:55



81 PURPLE
PANTONE® FABRIC: 19-3737 TPX
PANTONE® PAPER: 7447 C
C:90 M:100 Y:30 K:15



3P ULTRA PURPLE
PANTONE® FABRIC: 19-3540-TPX
PANTONE® PAPER: 2623 C
C:64 M:100 Y:0 K:26



PZ PURPLE MARL
PANTONE® FABRIC: 19-3850 TPX
PANTONE® PAPER: 7671 C
C:82 M:78 Y:0 K:0

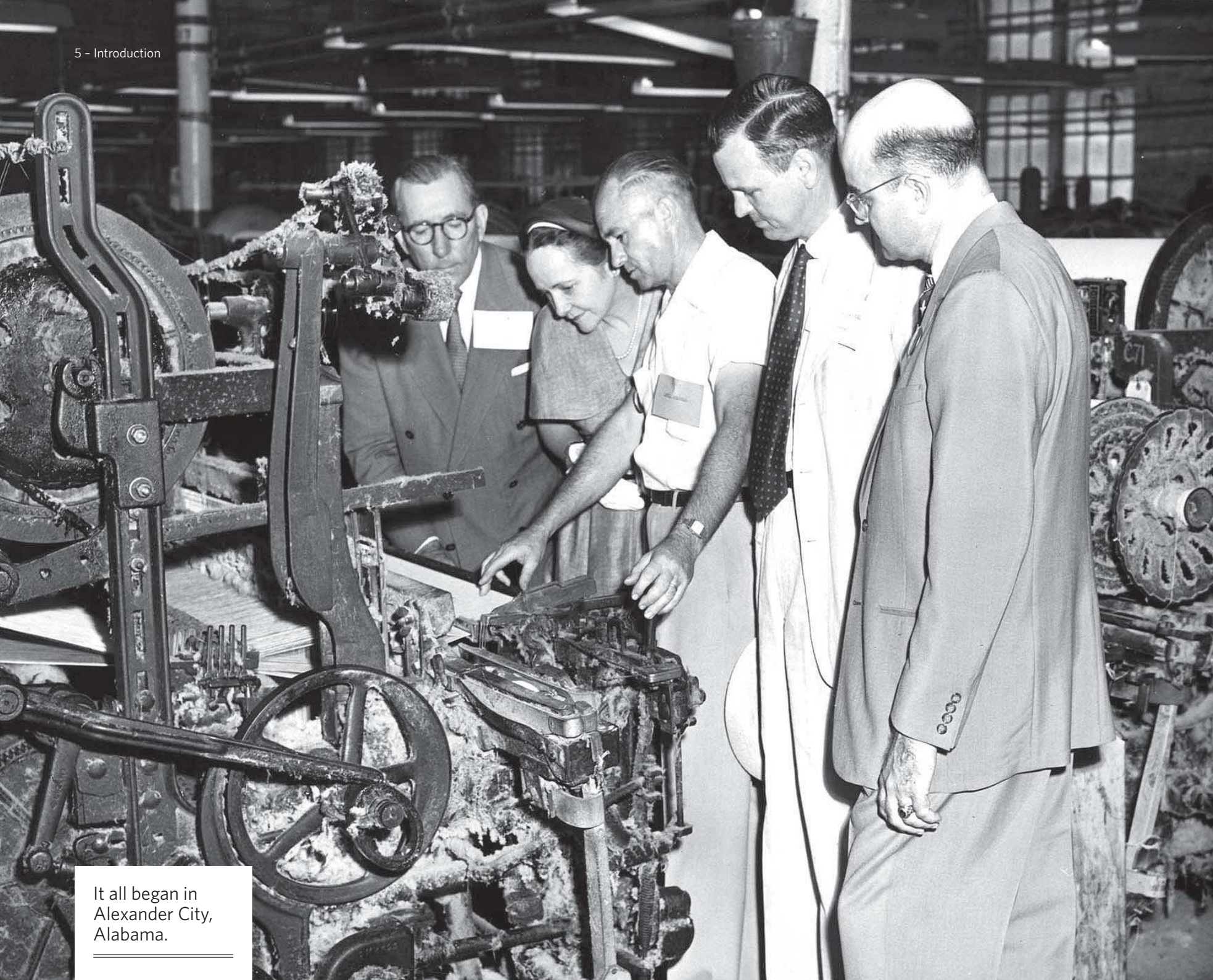
At Russell, there have always been stories of innovation, quality and integrity behind everything we do. Stories of new products and of established favourites. Tales of innovative fibres and of garments that will be loved and worn with pride. Some people strive to be first. Some people strive to be best. We've always said, 'let's strive to be both'. It's why we've been pioneers at the cutting edge since 1902. Every fibre tells a story. We'd like to share a few of them with you.



WRITING A NEW CHAPTER



INTRODUCTION.....	PAGE-6
CHAPTER 1 - SHIRTS & STRETCH TOPS.....	PAGE-10
CHAPTER 2 - KNITWEAR.....	PAGE-44
CHAPTER 3 - T-SHIRTS.....	PAGE-50
CHAPTER 4 - POLOS.....	PAGE-62
CHAPTER 5 - SWEATSHIRTS.....	PAGE-78
CHAPTER 6 - FLEECE.....	PAGE-94
CHAPTER 7 - JACKETS.....	PAGE-102
CHAPTER 8 - TROUSERS & SHORTS.....	PAGE-124
APPENDICES - RANGE OVERVIEW.....	PAGE-130
SIZE GUIDE.....	PAGE-136
COLOUR PALETTE.....	PAGE-140



It all began in
Alexander City,
Alabama.

INTRODUCTION



We've been rewriting the future since 1902

At Russell we're proud of our history and our heritage. But we also know that we're only as good as our last collection – and that our future will always depend on the next one.

That's why we're one of the few manufacturers in our field of the clothing business to operate a full in-house design team. Talented creative people with a unique eye for style, backed by impressive technical knowledge and a genuine understanding of what the market wants. That's how we can come up with innovative clothing season after season – clothes built to perform, to work hard, to look great and to offer superb comfort, wear after wear and wash after wash.



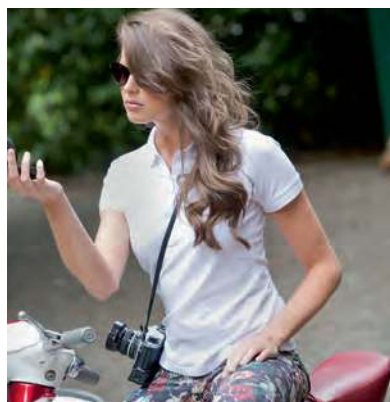
566M & 566F
New
Stretch Polo
See page 65

Another year, another fresh chapter

Every year we aim to introduce new products that will help you help your customers.

Now, we're delighted to reveal the latest additions to our range with stories of style and colour - developed to bring even more choice to teamwear. We hope you like them.

For starters we launch our most stylish polo ever – the Russell Stretch Polo, with Lycra®, in male and female styles. Then there's a new, wider range of colours available in our PolyCotton Poplin shirts – to help your customers reflect their brand identity. And in addition to that we also add a further 6 colours to our HD T – our massively successful launch story of 2014.



Stretch Polo pages 65 & 66



PolyCotton Poplin shirts pages 29 & 30



HD T pages 53 & 54

Made by Russell means made responsibly

All of our production facilities comply with our strict internal Code of Conduct. The codes to which we adhere include those of WRAP, the independent Worldwide Responsible Accredited Production Programme.

Our entire range also conforms to Oeko-Tex® 100 standards – which ensure that no illegal or harmful substances are used in the production of any of our garments.





934M & 934F
PolyCotton
Poplin Shirt
See page 29

CHAPTER 1

Shirts & Stretch Tops



The original designer label.

In 2004 the launch of Russell Collection transformed our industry, with a design approach previously reserved for retail fashion. The result is stylish, high quality corporate teamwear with a whole new level of designer flair and an exceptional attention to detail.

Today, more than a decade later, we continue to innovate and to lead the way with shirts and knitwear that are tailored to flatter, and designed to perform.

Innovation after innovation

Ever since its launch, Russell Collection has led the way in the sector, with innovations in the fabrics we use and the ways in which our shirts are constructed.

Our in-house design team constantly research new fabrics and new ways to use them. In 2008, for example, we introduced the eco-friendly, high performance Tencel® fabric. Our Ultimate Non-Iron shirt, launched in 2009, combines an advanced fibre treatment with a taped seam construction to create its exceptional non-iron qualities. And last year our Ultimate Stretch Shirt brought the Elastomultiester (LYCRA® T400®) fibre to the imprint market for the first time.



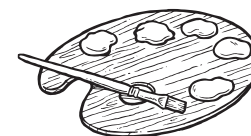
Designer flair in every detail

The designer touch isn't just about the distinctive cut and the style of every Russell Collection garment (though obviously that's important). It's about all those important little details too.

It's about the princess panels in the Ultimate Stretch shirt; that contrasting ribbon in the neck of the Fitted Tencel; the fashionable twin button fastening on the Ladies' Ultimate Non-Iron Shirt. You can check many of the important little details in the pages ahead – and for the full picture, visit our website.

Made to match

At Russell we know that teamwear isn't just about quality and comfort – it's about brand identity and looking great in front of customers.



That's why we've introduced five new colours for our PolyCotton Poplin Classic Fit shirt, giving you the chance to mix up your teamwear garments (whether it's our tees, polos or sweats) and match them with one core colour. So you'll get the same fine quality you've come to expect from Russell Collection, combined with the palette you want. Check out our range overview at the back of the catalogue to see how easy it is to make your match.



569M
Classic
Cotton Polo
See page 71

141M
Softshell Gilet
See page 107

001M
PolyCotton
Twill Trousers
See page 127

569F
Classic
Cotton Polo
See page 71

Chapter 1. Shirts & Stretch Tops - 12



155M
Slim T
See page 55

934F
PolyCotton
Poplin Shirt
See page 29

Ultimate Stretch Shirt



Stretching ahead of the competition (again)

Our Ultimate Stretch Shirt is the first in the market to use the revolutionary elastomultiester (LYCRA® T400® fibre).

It's a revolutionary fibre originally developed for jeans, that nobody else in this market is using. It gently stretches and recovers in every direction for a premium shirt that retains its fit, all day long.

The Ultimate Stretch Shirt is where you'd expect Russell to be – at the cutting edge of the industry.

Crisper, sharper, longer

When you first put it on, the Ultimate Stretch Shirt looks pretty much like another smart business shirt. Eight hours later, though – after a day spent in meetings, in the shop or restaurant, or perhaps driving a company vehicle – the Ultimate will still look and feel great. That's the difference.

Check the details

Men's - 960M/961M

Ladies' - 960F/961F

1 Excellent shape retention for a lasting fit

2 Short leaf, semi cutaway collar

3 Narrow placket

4 Durable fabric

5 Square edged cuffs (R-960M-0)

6 Cuff link option (R-960M-0)

7 Moisture management for cool comfort

8 Darts at back

9 Curved hem

1 Excellent shape retention for a lasting fit

2 Neat modern collar

3 Concealed placket

4 Durable fabric

5 Cocktail cuffs (R-960F-0)

6 Moisture management for cool comfort

7 Princess panel seams (no side seams)

8 Darts at back

9 Curved hem

LYCRA® is a trademark of INVISTA



See more detail shots online

Get more online

- 360 shots
- Product Video
- Full Product spec
- Imagery
- Colour/Size & Fabric Guides

www.russelleurope.com

Fact check



A smart, business-like shirt with an exceptionally refined appearance.

PRODUCT	FIT	SIZES*
R-960M-0 Men's Long Sleeve Ultimate Stretch Shirt	 Fitted	 S-4XL
R-961M-0 Men's Short Sleeve Ultimate Stretch Shirt		
R-960F-0 Ladies' Long Sleeve Ultimate Stretch Shirt	 Fitted	 XS-4XL
R-961F-0 Ladies' Short Sleeve Ultimate Stretch Shirt		

COLOURS



MATERIAL:
75% cotton/
25% elastomultiester
(LYCRA® T400® fibre)



LAUNDRY CARE:
Suitable for 40°C wash
and tumble dry (do not use
fabric softeners)



WEIGHT:
White: 125g/m²
Colours: 130g/m²



ORIGIN:
Bangladesh



PACKING:
Pack 1/ Carton 12

Where will you see it?

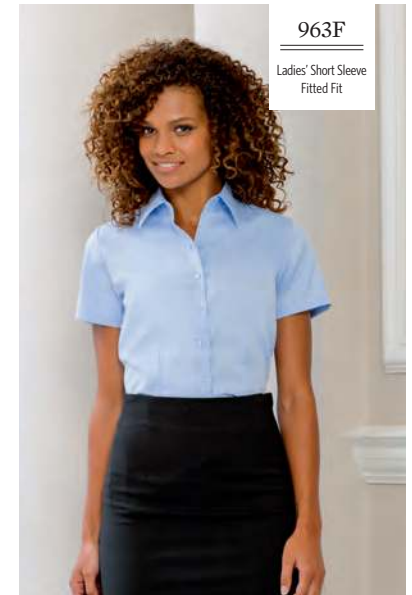
- Retail
- Financial
- Sales
- Hospitality

*For more detailed sizing please refer to our size guide – page 136.

Herringbone Shirt



Fitted/Tailored Fit



Birth of a contemporary classic

Why the Herringbone? Because we believe there's space for a contemporary alternative to the best-selling Oxford shirt. The first herringbone shirt to the imprint market offers you the ideal combination of style and durability. It's ideal for businesses where a smarter, more formal image will be welcome – perhaps in the financial sector, or upmarket retail, sales and travel.

It's all in the weave

The latest addition to Russell Collection is up-to-the-minute and timeless at the same time. The herringbone pattern has been woven into wool, twill and tweed for centuries. Yet our Herringbone Shirt is the very first of its kind in the imprint market, probably anywhere in the world. Our Herringbone is as versatile and hard-wearing as an Oxford, providing a distinctive and practical alternative.

Check the details

Men's - 962M/963M

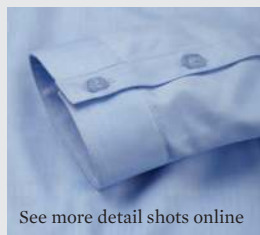


Ladies' - 962F/963F



- 1 Classic retail fabric
- 2 Easy care
- 3 No show through
- 4 Short, semi cutaway collar
- 5 Narrow placket
- 6 Rounded cuffs (R-962M-0)
- 7 Cuff link option (R-962M-0)
- 8 Curved hem

- 1 Classic retail fabric
- 2 Easy care
- 3 No show through
- 4 Neat, modern collar
- 5 Narrow placket
- 6 Stylish, narrow cuff with extended gauntlet (R-962F-0)
- 7 Darts at chest, front and back hem
- 8 Curved hem



See more detail shots online

Get more online

- 360 shots
- Product Video
- Full Product spec
- Imagery
- Colour/Size & Fabric Guides

www.russelleurope.com

Fact check



Birth of a contemporary classic. The first herringbone shirt to the imprint market. The ideal combination of style and durability, a contemporary alternative to the Oxford.

PRODUCT	FIT	SIZES*
R-962M-0 Men's Long Sleeve Herringbone Shirt	 Tailored	 S-4XL
R-963M-0 Men's Short Sleeve Herringbone Shirt		
R-962F-0 Ladies' Long Sleeve Herringbone Shirt	 Fitted	 XS-4XL
R-963F-0 Ladies' Short Sleeve Herringbone Shirt		

COLOURS



MATERIAL:
84% cotton/
16% polyester mini
herringbone



LAUNDRY CARE:
Suitable for 40°C wash and
tumble dry



WEIGHT:
White: 125g/m²
Colours: 130g/m²



ORIGIN:
Bangladesh



PACKING:
Pack 1/ Carton 12

Where will you see it?

- Retail
- Sales
- Financial
- Hospitality
- Local Authority

*For more detailed sizing please refer to our size guide – page 136.

Oxford Shirt – Male



Classic/Tailored Fit



Weaving a popular classic

The Oxford is and always has been the most popular shirt in Russell Collection. And it's no big surprise why.

Oxford weave is a core fabric in the shirting world. Ideal for any corporate team, our Oxford range allows everyone to look their best, while presenting a smart and consistent team appearance.

Keeping the traditional bang up to date

There's been an Oxford shirt in Russell Collection since it launched and it has always been and remains our most popular shirt. But here at Russell we're not content with mere success, we also like to keep ahead of current trends.

Launched ten years ago in classic fit, we added tailored fit to the gents' Oxford in 2012. It's all about choice – and once again we were the first in the market to expand our core offering.

Check the details

Men's Tailored Fit – 922M/923M

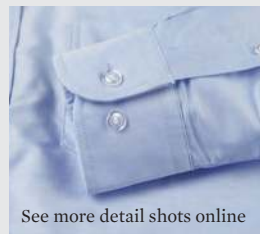


- 1 Stiffened semi-cutaway boned collar
- 2 No chest pocket
- 3 Stylish, rounded edge 2 button adjustable cuff, with option for cuff links (R-922M-0)
- 4 Rounded hem
- 5 Easy care, spare buttons
- 6 Double turnback hem on sleeves (R-923M-0)

Men's Classic Fit – 932M/933M



- 1 Button down collar
- 2 Back yoke with 2 side pleats
- 3 Rounded 2 button adjustable cuffs plus single button on cuff gauntlet (R-932M-0)
- 4 V-shaped pocket over left chest
- 5 Rounded hem
- 6 Easy care, spare buttons



See more detail shots online

Get more online

- 360 shots
- Full Product spec
- Imagery
- Colour/Size & Fabric Guides

www.russelleurope.com

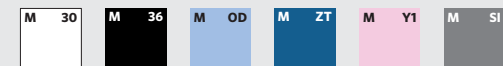
Fact check



Oxfords are one of the most popular shirt styles around. With our contemporary tailored men's shirts our Oxfords give you still more choice for a smart and contemporary look.

PRODUCT	FIT	SIZES*
R-922M-0 Men's Long Sleeve Tailored Easy Care Oxford Shirt	 Tailored	 S-4XL
R-923M-0 Men's Short Sleeve Tailored Easy Care Oxford Shirt		
R-932M-0 Men's Long Sleeve Easy Care Oxford Shirt	 Classic	 S-6XL
R-933M-0 Men's Short Sleeve Easy Care Oxford Shirt		

COLOURS – R-932M-0 & R-933M-0



COLOURS – R-922M-0 & R-923M-0



MATERIAL:
70% cotton/
30% polyester



WEIGHT:
White: 130g/m²
Colours: 135g/m²



PACKING:
Pack 1/ Carton 12



LAUNDRY CARE:
Suitable for 40°C wash and tumble dry



ORIGIN:
Bangladesh

Where will you see it?

- Emergency Services
- Rail/Airports
- Sales
- Financial
- Hospitality
- Local Authority
- Colleges/ Universities

*For more detailed sizing please refer to our size guide – page 136.

Oxford Shirt – Female

Tailored Fit



A more distinctive weave

Oxford describes a weave first created by Scottish fabric mills in the 19th century. It incorporates a thicker yarn and a thinner yarn to create a distinctive, textured finish. Sometimes – in our blue shirts for example – a contrasting colour on the thinner yarn can add a more textured appearance too.

At home everywhere it goes

Once the shirt of choice on the polo fields of England, and an Ivy League classic in the US, the Oxford is comfortable anywhere.

The distinctive weave structure creates an extremely durable fabric that not only looks the part, but also washes and irons beautifully.

Check the details

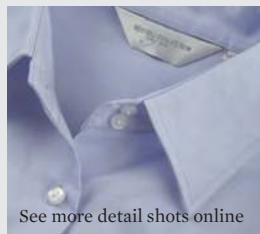
Ladies' - 932F



Ladies' - 933F



- ❶ 2 button collar stand with classic shaped collar
- ❷ Darts at bustline and back for tailored fit
- ❸ Easy care, spare button
- ❹ Rounded hem
- ❺ Rounded 2 button adjustable cuffs (R-932F-0)



See more detail shots online

Get more online 

- 360 shots
- Full Product spec
- Imagery
- Colour/Size & Fabric Guide

www.russelleurope.com

Fact check



Ideal for any team, our Oxford range allows everyone to look their best while presenting a smart and consistent appearance. Oxfords are one of the most popular shirt styles around.

PRODUCT	FIT	SIZES*
R-932F-0 Ladies' Long Sleeve Easy Care Oxford Shirt	 Tailored	 XS-6XL
R-933F-0 Ladies' Short Sleeve Easy Care Oxford Shirt		

COLOURS



MATERIAL:
70% cotton/
30% polyester



LAUNDRY CARE:
Suitable for 40°C wash and
tumble dry



WEIGHT:
White: 130g/m²
Colours: 135g/m²



ORIGIN:
Bangladesh



PACKING:
Pack 1/ Carton 12

Where will you see it?

- Emergency Services
- Rail/Airports
- Sales
- Financial
- Hospitality
- Local Authority
- Colleges/ Universities

*For more detailed sizing please refer to our size guide – page 136.

Ultimate Non-Iron Shirt – Male



Classic/Tailored Fit



100% cotton and truly non-iron

It's not easy to create a 100% cotton shirt that is truly non-iron. Which is why so many other suppliers simply don't. Traditional non-iron technologies simply apply a coating to the fabric surface. In ours the non-iron qualities are built-in.



An advanced fibre treatment and taped seams mean that it stays wrinkle free for much longer than traditional methods. So the wearer stays smart all day long – without the inconvenience of ironing.

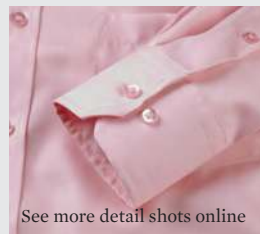
A new fit for a new generation

This was the first shirt that we launched with two different fits across the men's range. From market research and talking to our customers we realised that people wanted a different fit for a more contemporary workforce.


They wanted something more slim fitting, not so formal, with more modern cuffs and placket and without the button down collar. And so, in 2009, our gents' tailored fit was born.

Check the details

Men's Classic Fit – 956M/957M	Men's Tailored Fit – 958M/959M
	
<p>1 Classic fit cut with semi-cutaway button down collar and chest pocket</p> <p>2 Contemporary size mitred cuff, adjustable with two buttons and with option for cuff links (R-956M-0)</p> <p>3 Double turnback hem on sleeves (R-957M-0)</p> <p>4 Back yoke with two pleats</p> <p>5 Rounded hem</p> <p>6 Spare buttons</p>	<p>1 Contemporary, tailored cut with modern stiffened, semi-cutaway boned collar</p> <p>2 Stylish, mitred cuff, adjustable with two buttons and with option for cuff links (R-958M-0)</p> <p>3 Double turnback hem on sleeves (R-959M-0)</p> <p>4 Without chest pocket</p> <p>5 Rounded hem</p> <p>6 Spare buttons</p>



See more detail shots online

Get more online 

- 360 shots
- Full Product spec
- Imagery
- Colour/Size & Fabric Guide

www.russelleurope.com

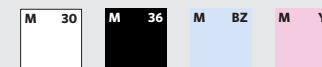
Fact check



Our most premium shirt, offering a luxurious fabric and elegant contemporary design.

PRODUCT	FIT	SIZES*
R-956M-0 Men's Long Sleeve Ultimate Non-Iron Shirt R-957M-0 Men's Short Sleeve Ultimate Non-Iron Shirt	 Classic	 S-4XL
R-958M-0 Men's Long Sleeve Tailored Ultimate Non-Iron Shirt R-959M-0 Men's Short Sleeve Tailored Ultimate Non-Iron Shirt	 Tailored	 S-4XL

COLOURS



MATERIAL:
100% cotton micro twill



LAUNDRY CARE:
Suitable for 40°C wash and tumble dry



WEIGHT:
120g/m²



ORIGIN:
Bangladesh



PACKING:
Pack 1/ Carton 12

Where will you see it?

- Retail
- Sales
- Financial
- Hospitality

*For more detailed sizing please refer to our size guide – page 136.

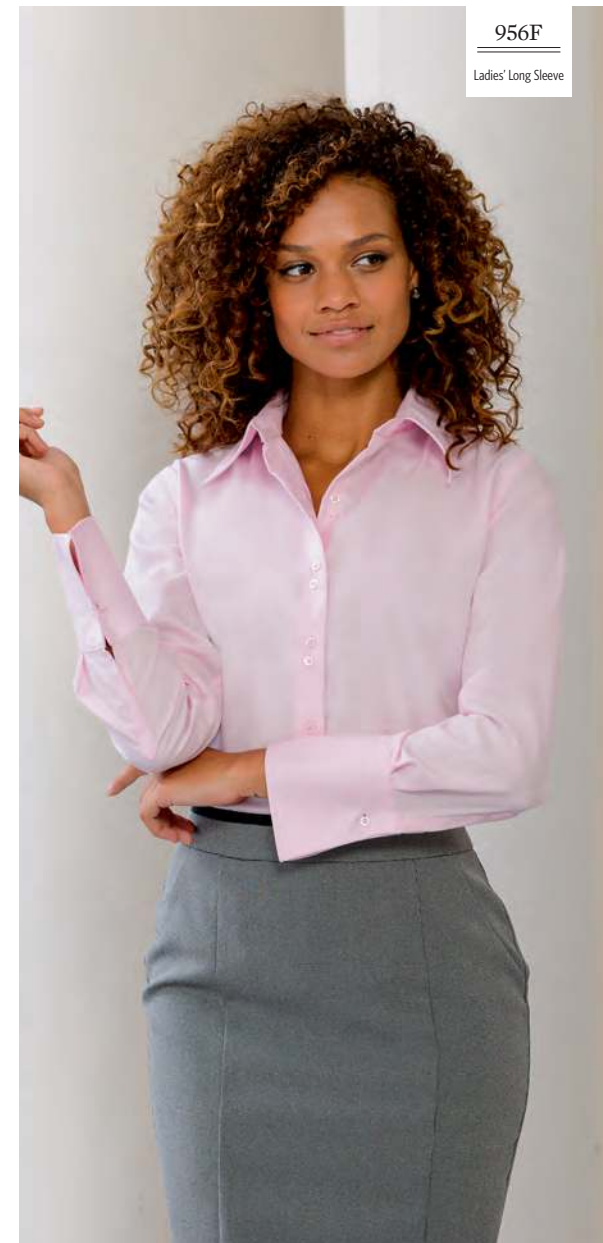


RUSSELL
COLLECTION

Ultimate Non-Iron Shirt – Female



Tailored Fit



Marinated like a steak, built on a scaffold

We do two things to make our shirts truly non-iron. Firstly the high-quality, compact cotton is treated with a special vapour. Like marinating meat, it makes the fibres plumper and softer, and creates an even tighter weave – so there's nowhere for creases to form.

Secondly all seams possible are taped internally. These taped seams form scaffolding in the fabric – so it holds its shape and resists creasing.

Keep it non-iron for longer

Our Ultimate Non-Iron Shirt will keep its non-iron qualities for much longer than normal easycare finishes – but only if you look after it properly.

- Wash at 40°C
- Don't overload the washing machine
- Hang up your shirt as soon as the wash cycle is finished
- If tumble drying do not overload the dryer and dry on a low temperature

Check the details

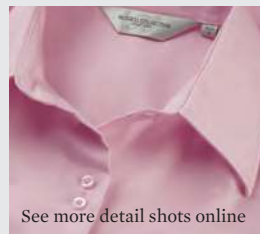
Ladies' - 956F



Ladies' - 957F



- 1 Contemporary fit combined with contemporary design features
- 2 Stylish and relaxed long edged collar
- 3 Fashionable twin button fastening and shaped at the waist for flattering feminine silhouette
- 4 Long, squared edge flared cuff with single button fastening and option for cuff links (R-956F-0)
- 5 Double turnback hem on sleeves (R-957F-0)
- 6 Rounded hem
- 7 Spare buttons



See more detail shots online

Get more online

- 360 shots
- Full Product spec
- Imagery
- Colour/Size & Fabric Guide

www.russelleurope.com

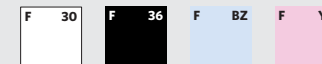
Fact check



Our most premium shirt, offering a luxurious fabric and elegant contemporary design for a fashionably modern ladies' shirt.

PRODUCT	FIT	SIZES*
R-956F-0 Ladies' Long Sleeve Ultimate Non-Iron Shirt	 Tailored	 XS-4XL
R-957F-0 Ladies' Short Sleeve Ultimate Non-Iron Shirt		

COLOURS



MATERIAL:
100% cotton micro twill



LAUNDRY CARE:
Suitable for 40°C wash and tumble dry



WEIGHT:
120g/m²



ORIGIN:
Bangladesh



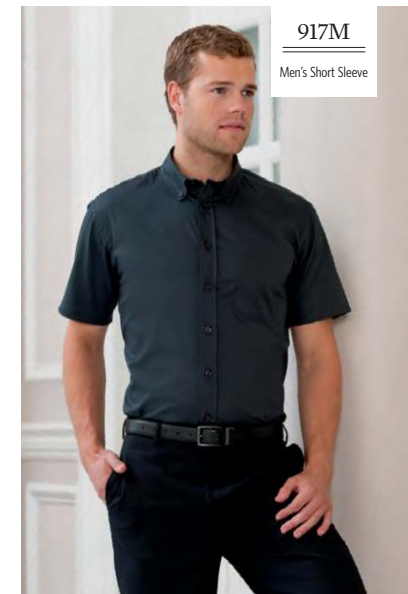
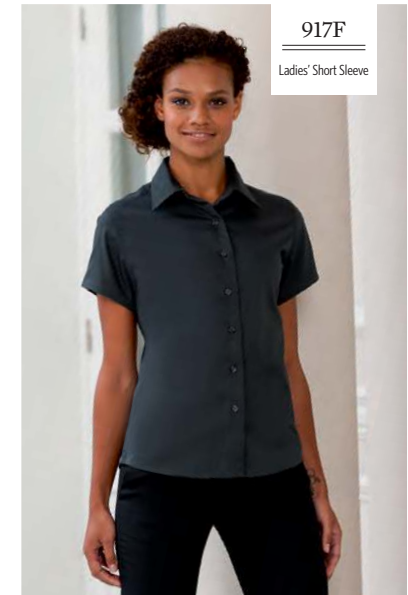
PACKING:
Pack 1/ Carton 12

Where will you see it?

- Retail
- Sales
- Financial
- Hospitality

*For more detailed sizing please refer to our size guide – page 136.

Classic Twill Shirt



Classic Fit

Check the details

Men's – 916M/917M



- 1 Soft to touch peached fabric
- 2 Relaxed, button down collar
- 3 Left chest pocket
- 4 Stylish double buttoned rounded edge cuff (R-916M-0)
- 5 Pointed fabric patches on side seam hem
- 6 Dye-to-match grosgrain tape along neck seam
- 7 Curved hem
- 8 Spare buttons
- 9 Decorative fabric patch below back yoke

Ladies' – 916F/917F



- 1 Soft to touch peached fabric
- 2 Relaxed collar
- 3 Stylish double buttoned rounded edge cuff (R-916F-0)
- 4 Pointed fabric patches on side seam hem
- 5 Dye-to-match grosgrain tape along neck seam
- 6 Curved hem
- 7 Spare buttons
- 8 Decorative fabric patch below back yoke



See more detail shots online



Get more online

- 360 shots
- Full Product spec
- Imagery
- Colour/Size & Fabric Guide

www.russelleurope.com

Fact check



We've brought the classic twill shirt into the 21st century. Soft twill fabric, relaxed styling and modern design features, breathing new life into an old favourite.

PRODUCT	FIT	SIZES*
R-916M-0 Men's Long Sleeve Classic Twill Shirt	 Classic	 S-4XL
R-917M-0 Men's Short Sleeve Classic Twill Shirt		
R-916F-0 Ladies' Long Sleeve Classic Twill Shirt	 Classic	 XS-2XL
R-917F-0 Ladies' Short Sleeve Classic Twill Shirt		

COLOURS



MATERIAL:
100% cotton twill



LAUNDRY CARE:
Suitable for 40°C wash and tumble dry



WEIGHT:
130g/m²



ORIGIN:
Sri Lanka



PACKING:
Pack 1/ Carton 12

Where will you see it?

- Retail
- Sales
- Hospitality
- Local Authority

*For more detailed sizing please refer to our size guide – page 136.

Roll Sleeve Twill Shirt

Fitted Fit



Check the details

Men's – 918M/919M

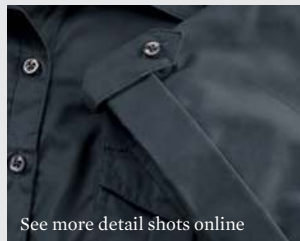


- ❶ Semi cutaway, relaxed collar
- ❷ Square edged adjustable cuff (R-918M-0)
- ❸ Button on outer sleeve and fabric tab on inside of sleeve allow it to be rolled up and tabbed
- ❹ Dye-to-match grosgrain patches on side seam hem
- ❺ Dye-to-match grosgrain tape along neck seam
- ❻ Rounded hem
- ❼ Spare buttons

Ladies' – 918F/919F



- ❶ Relaxed collar
- ❷ Square edged cuff with adjustable cuffs (R-918F-0)
- ❸ Button on outer sleeve and fabric tab on inside of sleeve allow it to be rolled up and tabbed
- ❹ Fitted style with shaping at waist, bust, front and back hem darts
- ❺ Dye-to-match grosgrain fabric patches on side seam hem
- ❻ Dye-to-match grosgrain tape along neck seam
- ❼ Rounded hem
- ❽ Spare buttons



See more detail shots online



Get more online

- 360 shots
- Full Product spec
- Imagery
- Colour/Size & Fabric Guide

www.russelleurope.com



RUSSELL
COLLECTION

Fact check



Young and stylish – this roll-sleeve shirt with patch pockets is the perfect choice wherever a fresh and casual appearance is required.

PRODUCT	FIT	SIZES*
R-918M-0 Men's Roll Sleeve Shirt – Long Sleeve	 Fitted	 S-4XL
R-919M-0 Men's Roll Sleeve Shirt – Short Sleeve		
R-918F-0 Ladies' Roll Sleeve Shirt – 3/4 Sleeve	 Fitted	 XS-2XL
R-919F-0 Ladies' Roll Sleeve Shirt – Short Sleeve		

COLOURS



MATERIAL:
100% cotton twill



LAUNDRY CARE:
Suitable for 40°C wash and tumble dry



WEIGHT:
130g/m²



ORIGIN:
Sri Lanka



PACKING:
Pack 1/ Carton 12

Where will you see it?

- Retail
- Hospitality

*For more detailed sizing please refer to our size guide – page 136.

PolyCotton Poplin Shirt - Classic Fit

934M

Men's
Long Sleeve
Classic Fit

934F

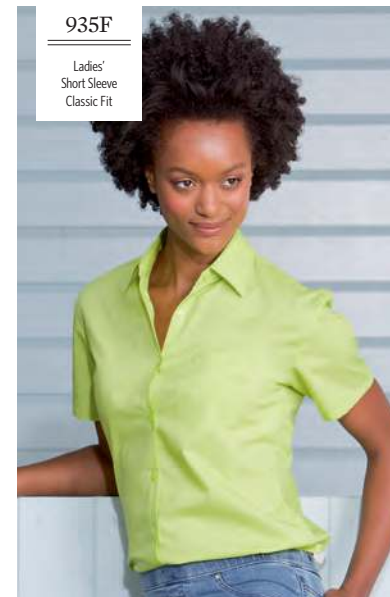
Ladies'
Long Sleeve
Classic Fit



Extended Colours

935F

Ladies'
Short Sleeve
Classic Fit



935M

Men's
Short Sleeve
Classic Fit



Check the details

Men's Classic Fit – 934M/935M

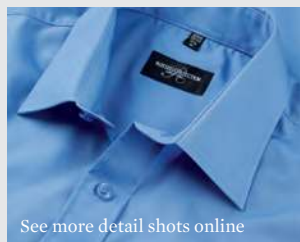


- ❶ Classic style boned collar
- ❷ Rounded 2 button adjustable cuff plus single button on cuff gauntlet (R-934M-0)
- ❸ Back yoke with 2 side pleats
- ❹ Mitred edge pocket over left chest
- ❺ Straight bottom hem
- ❻ Spare button
- ❼ Easy care

Ladies' Classic Fit – 934F/935F



- ❶ Classic single-button collar
- ❷ Rounded 2 button adjustable cuffs (R-934F-0)
- ❸ V-shaped pocket over left chest
- ❹ Rounded hem
- ❺ Spare buttons
- ❻ Easy care



See more detail shots online



Get more online

- 360 shots
- Full Product spec
- Imagery
- Colour/Size & Fabric Guide

www.russelleurope.com

Fact check



PolyCotton Poplin shirts are elegant and extremely versatile. And our Classic Fit now comes in 8 colours for both male and female styles.

PRODUCT	FIT	SIZES*
R-934M-0 Men's Long Sleeve PolyCotton Easy Care Poplin Shirt R-935M-0 Men's Short Sleeve PolyCotton Easy Care Poplin Shirt	 Classic	 S-4XL
R-934F-0 Ladies' Long Sleeve PolyCotton Easy Care Poplin Shirt R-935F-0 Ladies' Short Sleeve PolyCotton Easy Care Poplin Shirt	 Classic	 XS-4XL

EXTENDED COLOURS FOR 2015



MATERIAL:
65% polyester/
35% cotton poplin



LAUNDRY CARE:
Suitable for 50°C wash
and tumble dry



WEIGHT:
White: 115g/m²
Colours: 110g/m²



ORIGIN:
Bangladesh



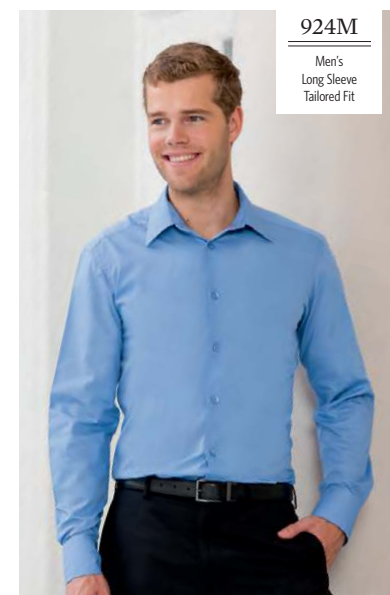
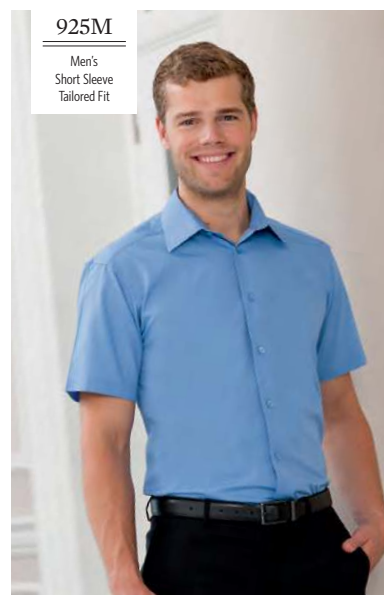
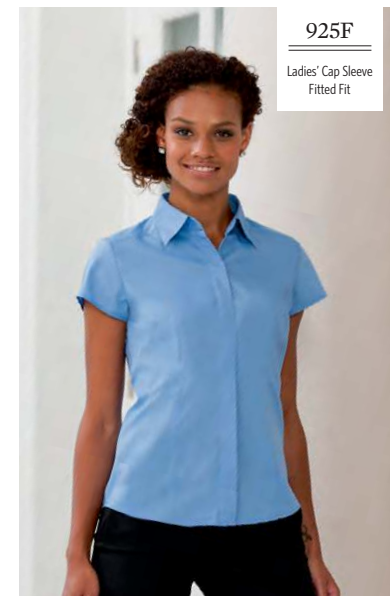
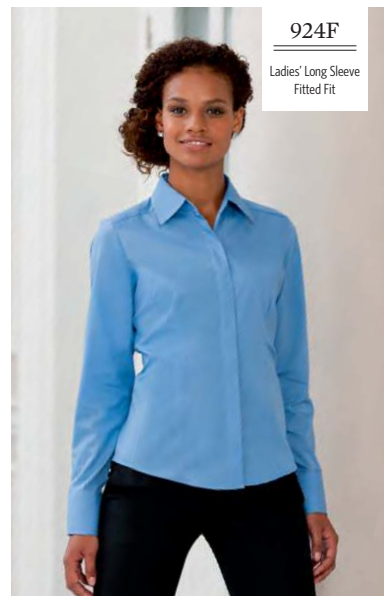
PACKING:
Pack 1/ Carton 12

Where will you see it?

- Retail
- Emergency Services
- Rail/Airports
- Sales
- Hospitality
- Local Authority

*For more detailed sizing please refer to our size guide – page 136.

PolyCotton Poplin Shirt



Check the details

Ladies' Fitted Fit – 924F/925F/926F

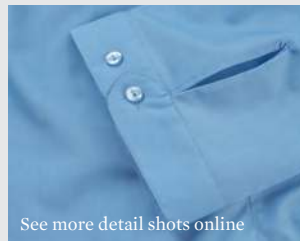


- 1 Concealed placket
- 2 Stylish yoke design
- 3 Darts on bust front hem and back panel for fitted shape
- 4 Decorative top stitch on darts
- 5 Modern rounded 2 button cuffs (R-924F-0)
2 button adjustable narrow cuff (R-926F-0)
- 6 Rounded hem
- 7 Spare buttons
- 8 Easy care

Men's Tailored Fit – 924M/925M



- 1 Contemporary, tailored cut with modern stiffened, semi-cutaway boned collar
- 2 Stylish, rounded edge 2 button adjustable cuff, with option for cuff links (R-924M-0)
- 3 Rounded hem
- 4 No chest pocket
- 5 Spare buttons
- 6 Easy care
- 7 Double turnback hem on sleeves (R-925M-0)



See more detail shots online



Get more online

- 360 shots
- Full Product spec
- Imagery
- Colour/Size & Fabric Guide

www.russelleurope.com

Fact check



PolyCotton Poplin shirts are elegant and extremely versatile. In addition to our Classic Fit we also offer a Tailored Fit for men and Fitted Fit for women giving you more choice in a staple shirt style.

PRODUCT	FIT	SIZES*
R-924M-0 Men's Long Sleeve PolyCotton Easy Care Tailored Poplin Shirt R-925M-0 Men's Short Sleeve PolyCotton Easy Care Tailored Poplin Shirt	 Tailored	 S-4XL
R-924F-0 Ladies' Long Sleeve PolyCotton Easy Care Fitted Poplin Shirt R-925F-0 Ladies' Cap Sleeve PolyCotton Easy Care Fitted Poplin Shirt R-926F-0 Ladies' 3/4 Sleeve PolyCotton Easy Care Fitted Poplin Shirt	 Fitted	 XS-4XL

COLOURS



MATERIAL:
65% polyester/
35% cotton poplin



LAUNDRY CARE:
Suitable for 40°C wash and
tumble dry



WEIGHT:
White: 115g/m²
Colours: 110g/m²



ORIGIN:
Bangladesh



PACKING:
Pack 1/ Carton 12

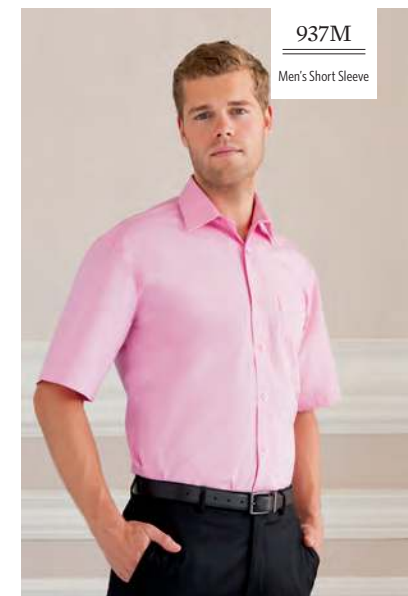
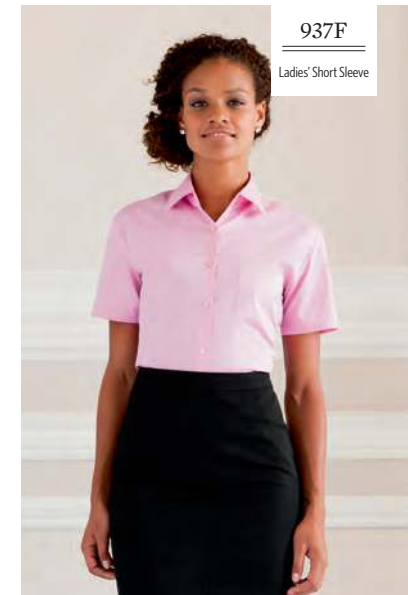
Where will you see it?

- Retail
- Emergency Services
- Rail/Airports
- Sales
- Hospitality
- Local Authority

*For more detailed sizing please refer to our size guide – page 136.

100% Cotton Poplin Shirt

Classic Fit



Check the details

Men's - 936M/937M

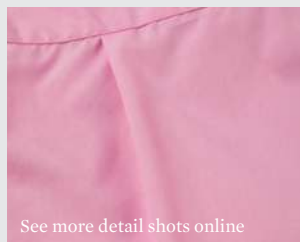


- 1 Classic style boned collar
- 2 Rounded 2 button adjustable cuff plus single button on cuff gauntlet (R-936M-0)
- 3 Back yoke with 2 side pleats
- 4 Pocket over left chest mitred edge pocket
- 5 Straight bottom hem
- 6 Spare buttons
- 7 Easy care

Ladies' - 936F/937F



- 1 Classic single button collar
- 2 Rounded 2 button adjustable cuffs (R-936F-0)
- 3 V-shaped pocket over left chest
- 4 Rounded hem
- 5 Spare buttons
- 6 Easy care



See more detail shots online



Get more online

- 360 shots
- Full Product spec
- Imagery
- Colour/Size & Fabric Guide

www.russelleurope.com



RUSSELL
COLLECTION

Fact check



This is an elegant and very durable shirt with all the natural wearer comfort of 100% cotton.

PRODUCT	FIT	SIZES*
R-936M-0 Men's Long Sleeve 100% Cotton Easy Care Poplin Shirt R-937M-0 Men's Short Sleeve 100% Cotton Easy Care Poplin Shirt	 Classic	 S-4XL
R-936F-0 Ladies' Long Sleeve 100% Cotton Easy Care Poplin Shirt R-937F-0 Ladies' Short Sleeve 100% Cotton Easy Care Poplin Shirt	 Classic	 XS-4XL

COLOURS



MATERIAL:
100% cotton poplin



LAUNDRY CARE:
Suitable for 40°C wash and tumble dry



WEIGHT:
White: 120g/m²
Colours: 125g/m²



ORIGIN:
Bangladesh



PACKING:
Pack 1/ Carton 12

Where will you see it?

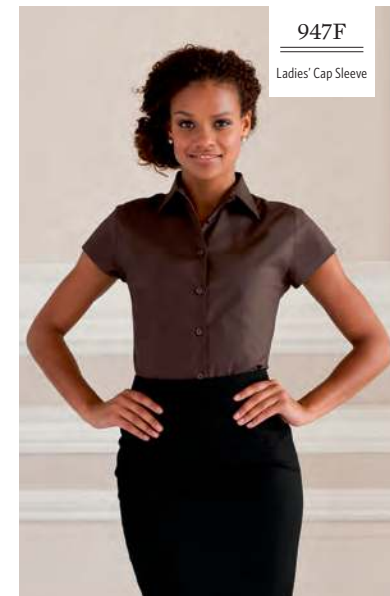
- Retail
- Emergency Services
- Rail/Airports
- Sales
- Hospitality
- Local Authority

*For more detailed sizing please refer to our size guide – page 136.

Fitted Stretch Shirt



Fitted Fit



Check the details

Men's – 946M/947M

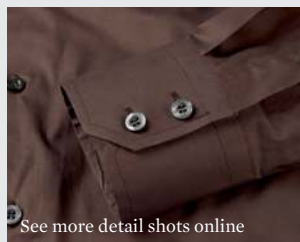


- 1 Smart, semi cutaway collar with single button
- 2 Mitred double buttoned cuff with single button on cuff gauntlet (R-946M-0)
- 3 Rounded hem
- 4 Spare buttons

Ladies' – 946F/947F



- 1 Classic single button collar
- 2 Stylish elbow length 3/4 sleeve with split cuff (R-946F-0)
- 3 Stylish capped short sleeves (R-947F-0)
- 4 Darts on back panel and on front hem, for fitted ladies' shape
- 5 Rounded hem
- 6 Spare buttons



See more detail shots online



Get more online

- 360 shots
- Full Product spec
- Imagery
- Colour/Size & Fabric Guide

www.russelleurope.com

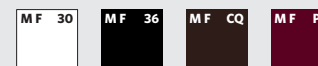
Fact check



Fitted cut and contemporary design make this style the right choice wherever a modern appearance is required.

PRODUCT	FIT	SIZES*
R-946M-0 Men's Long Sleeve Easy Care Fitted Shirt	 Fitted	 S-4XL
R-947M-0 Men's Short Sleeve Easy Care Fitted Shirt		
R-946F-0 Ladies' 3/4 Sleeve Easy Care Fitted Shirt	 Fitted	 XS-2XL
R-947F-0 Ladies' Cap Sleeve Easy Care Fitted Shirt		

COLOURS



MATERIAL:
97% cotton/
3% elastane poplin



LAUNDRY CARE:
Suitable for 40°C wash and tumble dry



WEIGHT:
140g/m²



ORIGIN:
Bangladesh



PACKING:
Pack 1/ Carton 12

Where will you see it?

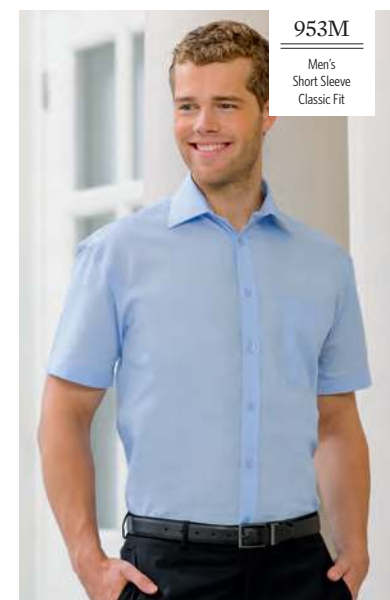
- Retail
- Hospitality
- Financial

*For more detailed sizing please refer to our size guide – page 136.

Corporate Tencel Shirt



Classic/Tailored Fit



Check the details



Men's - 952M/953M

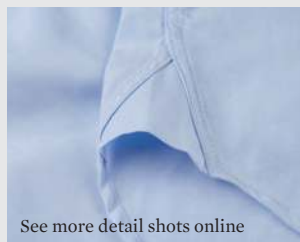


- 1 Semi cutaway boned collar
- 2 Tonally contrasting satin ribbon along neck seam
- 3 Square-edged, 2 button adjustable angled cuff with option for cuff links (R-952M-O)
- 4 Mitred corner pocket on left chest
- 5 Back yoke with 2 side pleats
- 6 Double ply gusset on side seam hem for added strength
- 7 Rounded hem
- 8 Spare buttons
- 9 Easy care

Ladies' - 952F/953F



- 1 Relaxed, long edged collar
- 2 Tonally contrasting satin ribbon along neck seam
- 3 Square edge turn back double cuffs with button cuff link fastening and option for cuff links
- 4 Back shoulder yoke
- 5 Double ply gusset on side seam hem for added strength
- 6 Rounded hem
- 7 Spare buttons
- 8 Easy care



See more detail shots online



Get more online

- 360 shots
- Full Product spec
- Imagery
- Colour/Size & Fabric Guide

www.russelleurope.com



Fact check



A superior fabric is complemented with contemporary, elegant design, to offer a truly premium shirt.

PRODUCT	FIT	SIZES*
R-952M-O Men's Long Sleeve Tencel® Corporate Shirt R-953M-O Men's Short Sleeve Tencel® Corporate Shirt	 Classic	 S-4XL
R-952F-O Ladies' Long Sleeve Tencel® Corporate Shirt R-953F-O Ladies' 3/4 Sleeve Tencel® Corporate Shirt	 Tailored	 XS-4XL

COLOURS



MATERIAL:
67% Tencel® lyocell/
33% cotton poplin



LAUNDRY CARE:
Suitable for 40°C wash and
tumble dry



WEIGHT:
130g/m²



ORIGIN:
Bangladesh



PACKING:
Pack 1/ Carton 12

Where will you see it?

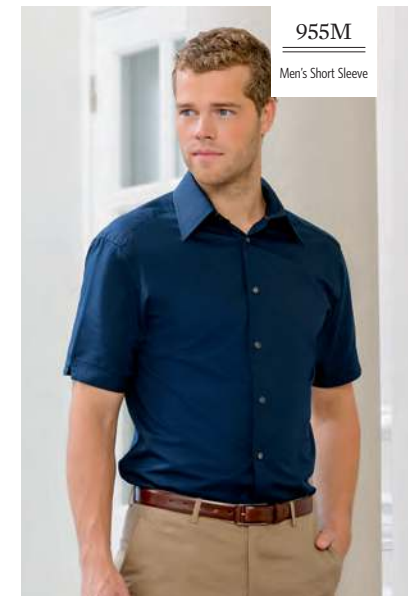
- Retail
- Sales
- Financial
- Hospitality

*For more detailed sizing please refer to our size guide – page 136.

Fitted Tencel Shirt



Fitted Fit



Check the details



Men's - 954M/955M

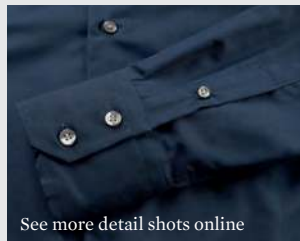


- 1 Stiffened, semi cutaway boned collar with smart double button collar stand
- 2 Contrasting deep pink satin ribbon along neck seam (white ribbon for white shirts)
- 3 Deep double buttoned mitred cuff (R-954M-O)
- 4 Notched "V" turn back cuff on sleeve (R-955M-O)
- 5 Stitched down box pleat on back of sleeve
- 6 Gusset panel on side seam hem
- 7 Rounded hem
- 8 Spare buttons
- 9 Easy care

Ladies' - 954F/955F



- 1 Stylish and relaxed long edged collar
- 2 Contrasting deep pink satin ribbon at neck seam (white ribbon for white shirts)
- 3 Square ended deep cuffs with side splits for ease of movement (R-954F-O)
- 4 Gusset panel on side seam hem
- 5 Rounded hem
- 6 Spare buttons
- 7 Easy care



See more detail shots online



Get more online

- 360 shots
- Full Product spec
- Imagery
- Colour/Size & Fabric Guide

www.russelleurope.com



Fact check



Our most fashionable shirt, designed for those environments where that extra bit of style is required.

PRODUCT	FIT	SIZES*
R-954M-O Men's Long Sleeve Tencel® Fitted Shirt	Fitted	S-4XL
R-955M-O Men's Short Sleeve Tencel® Fitted Shirt		
R-954F-O Ladies' 3/4 Sleeve Tencel® Fitted Shirt	Fitted	XS-2XL
R-955F-O Ladies' Cap Sleeve Tencel® Fitted Shirt		

COLOURS



MATERIAL:
54% cotton/
46% Tencel® lyocell twill



LAUNDRY CARE:
Suitable for 40°C wash and
tumble dry



WEIGHT:
136g/m²



ORIGIN:
Bangladesh



PACKING:
Pack 1/ Carton 12

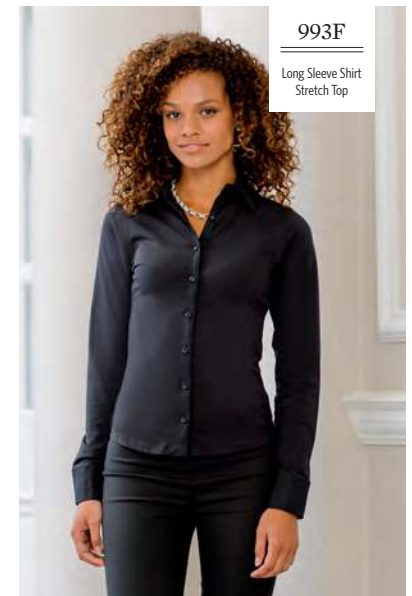
Where will you see it?

- Retail
- Sales
- Financial
- Hospitality

*For more detailed sizing please refer to our size guide – page 136.

Stretch Tops

Fitted Fit



Check the details

Ladies' – 990F/991F/992F

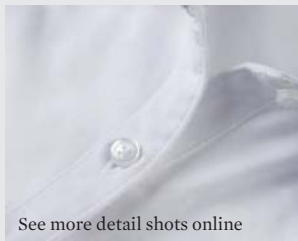


- 1 Elastane content gives super soft hand feel and retains shape
- 2 Separate waistband at hem for an elegant, smooth finish – helps to stop garment riding up
- 3 Fabric quality ensures minimal show through
- 4 Single sizes ensure best fit
- 5 Longer, hip skimming body length to suit all shapes
- 6 Easy to launder

Ladies' – 993F



- 1 Woven collar, cuffs and placket with stretch cotton body
- 2 Elastane content gives super soft hand feel and retains shape
- 3 Fabric quality ensures minimal show through
- 4 Single sizes ensure more individual fit
- 5 Longer, hip skimming body length to suit all shapes
- 6 Self coloured buttons
- 7 Easy to launder
- 8 Curved hem



See more detail shots online



Get more online

- Full Product spec
- Imagery
- Colour/Size & Fabric Guides

www.russelleurope.com

Fact check



Superior fit and finish from neckline to hem.

PRODUCT	FIT	SIZES*
R-990F-0 Sleeveless Stretch Top R-991F-0 Short Sleeve Stretch Top R-992F-0 3/4 Sleeve Stretch Top R-993F-0 Long Sleeve Shirt Stretch Top	 Fitted	 XS-4XL

COLOURS



MATERIAL:
90% jersey combed cotton / 10% elastane



LAUNDRY CARE:
Suitable for 40°C wash and tumble dry



WEIGHT:
White 215g/m²
Colours 220g/m²



ORIGIN:
Bangladesh



PACKING:
Pack 1/ Carton 36

Where will you see it?

- Retail
- Sales
- Financial
- Hospitality

*For more detailed sizing please refer to our size guide – page 136.

"The knitwear range is a natural sell alongside Russell shirts."



710F & 710M
V-Neck
Knitted Pullover
See page 45

CHAPTER 2

Knitwear



Knitwear with the designer touch too

When we launched our pullovers and cardigans more than a decade ago we were amongst the first big brands to pioneer finer gauge knitwear. Before we developed ours, the main options were either Italian knitwear or heavy, chunky - and quite frankly sparky - acrylic knitwear.

It was also refreshingly new because, while others in the market were 'cut and sew', our stylish, fully fashioned jumpers are created from patterned pieces that are knitted to shape.

Like our shirts, our knitwear is thoughtfully designed as part of Russell Collection – as a look at the label will confirm.

710 V-Neck Knitted Pullover



Check the details

Ladies' - 710F



Men's - 710M




710F & 710M

- ① Elastane on cuffs and waistband trim to retain shape and smart appearance
- ② Contemporary styling
- ③ Set in sleeve
- ④ Quick to dry
- ⑤ Extensive size range
- ⑥ Washable at 40° and tumble dryable



See more detail shots online



Get more online 

- 360 shots
- Full Product spec
- Imagery
- Colour/Size & Fabric Guides

www.russelleurope.com



RUSSELL
COLLECTION

Fact check



The classic, easy care V-neck pullover - for stylish layering over shirt or polo.

PRODUCT

R-710M-0 Men's V-Neck Knitted Pullover
R-710F-0 Ladies' V-Neck Knitted Pullover

SIZES



XXS-4XL

COLOURS



MATERIAL:
 50% cotton / 50% acrylic CottonBlend™



LAUNDRY CARE:
 Suitable for 40°C wash and tumble dry



WEIGHT:
 275g/m²



ORIGIN:
 Bangladesh



PACKING:
 Pack 1/ Carton 12

Where will you see it?

- Retail
- Rail/Airports
- Sales
- Financial
- Hospitality
- Local Authority

715 Ladies' V-Neck Knitted Cardigan



716 V-Neck Sleeveless Knitted Pullover



Check the details

Ladies' – 715F



- 1 Elastane on cuffs and waistband trim to retain shape and smart appearance
- 2 Contemporary styling
- 3 Dye to match buttons
- 4 Set in sleeve
- 5 Quick to dry
- 6 Extensive size range
- 7 Washable at 40° and tumble dryable

716M




- 1 Elastane on waistband trim to retain shape and smart appearance
- 2 Contemporary styling
- 3 Quick to dry
- 4 Extensive size range
- 5 Washable at 40° and tumble dryable



See more detail shots online



Get more online 

- 360 shots
- Full Product spec
- Imagery
- Colour/Size & Fabric Guides

www.russelleurope.com

Fact check



R-715F-0 The classic, contemporary styled, easy care V-neck cardigan – a lightweight, elegant outerlayer with shirt or polo.

R-716M-0 Sleeveless version of our classic, easy care V-neck.

PRODUCT

R-715F-0 Ladies' V-Neck Knitted Cardigan

SIZES



XXS-4XL

R-716M-0 V-Neck Sleeveless Knitted Pullover



XXS-4XL

COLOURS



MATERIAL:
50% cotton /50% acrylic CottonBlend™



LAUNDRY CARE:
Suitable for 40°C wash and tumble dry



WEIGHT:
275g/m²



ORIGIN:
Bangladesh



PACKING:
Pack 1/ Carton 12

Where will you see it?

- Retail
- Rail/Airports
- Sales
- Financial
- Hospitality
- Local Authority



CHAPTER 3

T-shirts



Looking good, wash after wash

Our T-shirts have become a bit of a legend in their own T-time. Anyone who's ever owned one knows that Russell T-shirts are designed to last longer.

They're built for repeated use, and to stay looking good, wash after wash. So if you demand quality and reliability in uniform and teamwear, you'll get real lifetime value from our tees.

Feel the quality

The one thing that makes the biggest, most obvious difference in a cotton T-shirt is the fabric you use to make it.

There are three kinds; 'Open end', 'Ringspun', 'Combed ringspun'. 'Ringspun' cotton integrates shorter fibres into the yarn, for a softer hand feel and greater durability. 'Combed ringspun yarn' starts with a combing process to remove shorter fibres, and results in an even smoother, stronger yarn.

At Russell we only ever use ringspun or combed ringspun cotton in our T-shirts.



Made in house, in Morocco



Most of our T-shirts are made in our own modern factory in Morocco.

It's a state-of-the-art vertical operation that gives us both real production flexibility and, given its location, very competitive lead times.

Our HD T – now even more colourful

Last year's launch of the HD T to the imprint T-shirt market was a huge success. The luxury feel and printability of its polycotton blend were just what sublimation printing had been waiting for. So this year we've extended the stylish range of marl colours even further.





165 HD T



"The HD T
has been
an instant
hit with our
customers"

The decoration on the T-shirts is for illustrative purposes only - the garments are supplied blank.

Extended colours



Designed for print

Why the HD T? Because the time's right for a quality tee in a polycotton blend that offers the best of both fabrics. It's suitable for a range of print processes, including sublimation, and has the luxury feel of a high-cotton blend.

Debunking two common myths

There's a myth that sublimation printing only works on 100% polyester. Not true. Our polycotton HD T is ideal for sublimation print – we've tested it and the results speak for themselves.

There's another myth that sublimation only works on white cloth. Not true. White might be best for colour reproduction but it's not the only option – we offer 9 marl colours and they produce a fashionably muted, retro feel – just what a large chunk of the market demands.

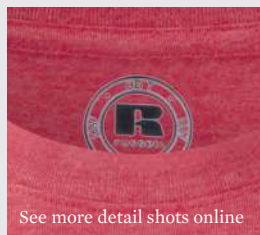
Check the details

Men's - 165M

Ladies' - 165F



- 1 PolyCotton mix
- 2 Slim fit
- 3 Shoulder to shoulder tape
- 4 Side seamed
- 5 Now available in 10 colours
- 6 Removable, adhesive neck label



Get more online

- 360 shots
- Product Video
- Full Product spec
- Imagery
- Colour/Size & Fabric Guides

www.russelleurope.com



Fact check



The PolyCotton T-Shirt that's designed for print – good for business.

PRODUCT

R-165M-0 Men's HD T
R-165F-0 Ladies' HD T

SIZES

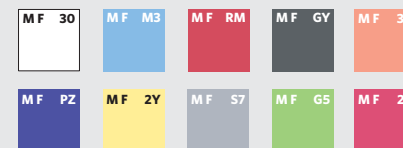


XS-2XL



XS-XL

NEW, EXTENDED COLOURS FOR 2015



MATERIAL:
 65% polyester/
 35% ringspun combed
 cotton



LAUNDRY CARE:
 Suitable for 40°C machine
 wash and tumble dry



WEIGHT:
 White: 155g/m²
 Colours: 160g/m²



ORIGIN:
 Bangladesh



PACKING:
 Pack 6/ Carton 36

Where will you see it?

- Retail
- Hospitality
- Front of House
- Promotional Merchandise
- Corporate Events

155 Slim T



"We'd been looking for a quality promotional T with a great fit - this was the one."



Slimmer, taller, smarter

Not that we like to brag, but we believe our 155 Slim T is quite simply the best fitting T-shirt on the market.

As the name suggests, it's designed to be slim fitting, but not too tight. It also has extra length to create an even slimmer, very contemporary look. The Slim T was introduced in 2013 and has become an instant classic for quality retail promotions.

Lighter too

The 155 Slim T was developed from our 150, which we'd introduced seven years ago as a response to the trend towards lighter, cooler fabrics. The 155 uses exactly the same popular fabric in a different, more flattering cut.

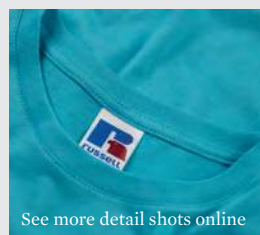
It's also available in 16 colours including bright, vibrant colours that are great for school teams, sports clubs, dance groups – the list goes on.

Check the details

Men's - 155M

Ladies' - 155F

- ❶ Available in male and female styles
- ❷ Tubular construction (R-155M-0)
- ❸ Side seamed for a feminine shape (R-155F-0)
- ❹ Back neck tape
- ❺ 16 colours
- ❻ Extra length



See more detail shots online

Get more online

- 360 shots
- Full Product spec
- Imagery
- Colour/Size & Fabric Guides

www.russelleurope.com

Fact check



It is slim – but not TOO tight. The modern look T made with attention to detail.

PRODUCT

R-155M-0 Men's Slim T
R-155F-0 Ladies' Slim T

SIZES



S-2XL



XS-XL

COLOURS



MATERIAL:

100% ring spun cotton



LAUNDRY CARE:

Suitable for 40°C machine wash and tumble dry



WEIGHT:

White: 140g/m²
 Colours: 145g/m²



ORIGIN:

Morocco



PACKING:

Pack 10/Carton 100

Where will you see it?

- Retail
- Sport/Leisure Centres
- Hospitality
- Promotional Merchandise
- Front of House
- Corporate Events
- Group Travel

150 Lightweight T-shirt



Check the details

150

- Tubular construction
- Back neck taping
- 1x1 rib knit collar
- Name label (R-150B-0)



Fact check



This may be a lightweight T-Shirt but in a quality that offers great wearer comfort and allows for top quality print and embroidery.

PRODUCT

- R-150M-0** Lightweight T-shirt
- R-150B-0** Children's Lightweight T-shirt

SIZES



S-2XL



1-12 years

COLOURS



MATERIAL:
100% ring spun cotton



LAUNDRY CARE:
Suitable for 40°C machine wash and tumble dry



WEIGHT:
White: 140g/m², Colours: 145g/m²



ORIGIN:
Morocco



PACKING:
Pack 10/Carton 100

Where will you see it?

- Retail
- Emergency Services
- Front of House
- Group Travel
- Sport/Leisure Centres
- Promotional Merchandise
- Corporate Events
- Schools
- Sports

180 Classic T-Shirt

180M



180B

Children's
Classic
T-shirt



"It's built to last,
which is why we
keep specifying
the 180."

Check the details

180

- Shoulder to shoulder taping
- Tubular construction
- 1x1 rib knit collar
- Name label (R-180B-0)



Fact check



The classic t-shirt that sets the standard for fabric and production quality, durability and wearer comfort.

PRODUCT

R-180M-0 Classic T-shirt

R-180B-0 Children's Classic T-shirt

SIZES



XS-4XL



1-12 years

COLOURS



R-180M-0 XS not available in Convo Grey. 3XL & 4XL available in Black, Bottle Green, Bright Royal, French Navy and White. R-180B-0 available in all colours except Convo Grey.



MATERIAL:

100% ring spun cotton



WEIGHT:

White: 175g/m², Colours: 180g/m²



PACKING:

Pack 12/Carton 72



LAUNDRY CARE:

Suitable for 40°C machine wash and tumble dry



ORIGIN:

Morocco

Where will you see it?

- Emergency Services
- Local Authority
- Horticulture/Agriculture
- Rail/Airports
- Sport/Leisure Centres
- Schools
- Logistics
- Promotional Merchandise
- Sports
- Warehousing
- Corporate Events

215 Classic Heavyweight T-Shirt



Check the details 215M

- Tubular construction
- Shoulder to shoulder taping
- 1x1 rib knit collar

Fact check

A top quality, heavyweight T-shirt, designed with real attention to detail.

PRODUCT

R-215M-0 Classic Heavyweight T-Shirt

SIZES



S-2XL

COLOURS



MATERIAL:
100% combed
ring spun cotton



LAUNDRY CARE:
Suitable for 40°C
machine wash and
tumble dry



WEIGHT:
White: 210g/m²
Colours: 215g/m²



ORIGIN:
Morocco



PACKING:
Pack 12/Carton 72

Where will you see it?

- Emergency Services
- Logistics
- Warehousing
- Local Authority
- Construction/Building
- Horticulture/Agriculture

010 Heavy Duty T-Shirt





310 Ladies' Fitted T-Shirt

Check the details 010M

- Double layered shoulder panels and twin needle stitching at armhole for additional strength
- Double layer yoke for internal identification
- Enzyme washed ring spun cotton for a softer feel and added comfort

Fact check

This premium T-Shirt has been specifically designed for the manual workplace and combines extra reinforcements and exceptional durability with comfort.

PRODUCT

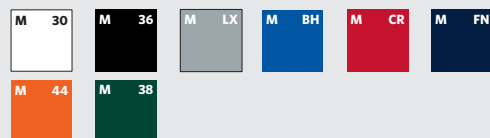
R-010M-0 Heavy Duty T-Shirt

SIZES



XS-4XL

COLOURS



MATERIAL:

100% combed ring spun cotton



LAUNDRY CARE:

Suitable for 60°C wash and tumble dry



WEIGHT:

180g/m²



ORIGIN:

Bangladesh



PACKING:

Pack 3/ Carton 36

Where will you see it?

- Emergency Services
- Logistics
- Warehousing
- Local Authority
- Construction/Building
- Horticulture/Agriculture

310F

Check the details 310F

- Contains elastane for superior fit and shape retention
- 1x1 rib knit collar

Fact check

The fitted stretch T-shirt for a true feminine fit.

PRODUCT

R-310F-0 Ladies' Fitted T-Shirt

SIZES



XS-XL

COLOURS



MATERIAL:

93% Combed Ring Spun Cotton / 7% Elastane



LAUNDRY CARE:

Suitable for 40°C machine wash and tumble dry



WEIGHT:

White: 215g/m²
Colours: 220g/m²



ORIGIN:

Pakistan



PACKING:

Pack 6/ Carton 36

Where will you see it?

- Retail
- Sales
- Hospitality
- Front of House
- Promotional Merchandise



577M & 577F
Ultimate
Cotton Polo
See page 69

CHAPTER 4

Polos



The ultimate team player

The polo was originally born as a sports shirt, popular over the years not just on polo fields but on tennis courts, golf courses and anywhere else people enjoy a little competition. Today, the modern polo shirt can help you look the part whatever kind of team you're in. That's why it's such a big hit for sports, corporate fashion and schools.

Often it's the little things that make people fall in love with a garment and keep them coming back for more. That's why we pay attention to some important details that are often overlooked by other suppliers. And in our new Stretch Polo all the details come together to create our most eye-catchingly stylish polo shirt ever.



566F
New
Stretch Polo
See page 65

Now in seven key styles

The latest addition to our polo range is the slim cut and eye-catching new Stretch Polo 566M and 566F, with Lycra®, available in 10 colours including our new Ultra Purple.

It means we now offer seven key polo styles – each with its own distinctive strengths.

From our entry level classics to our new Stretch Polo, every one of our polos is made to perform, day after day, wash after wash.



Male and female equality

We were one of the first major brands to offer male and female polo shirts instead of just unisex. We don't just scale down the men's style – the cut, the shape, the proportions and the details are all redesigned to create a more feminine fit and look.



Choose your fabric

The choice of fabric is often the first thing a buyer looks for in a polo shirt.

For some (most school buyers for example) the fact that polycotton holds its colour and dries more quickly is the key. For others, only the comfort of 100% cotton will do. If you're looking for a more fitted look that keeps its shape longer, cotton with Lycra® content is ideal.

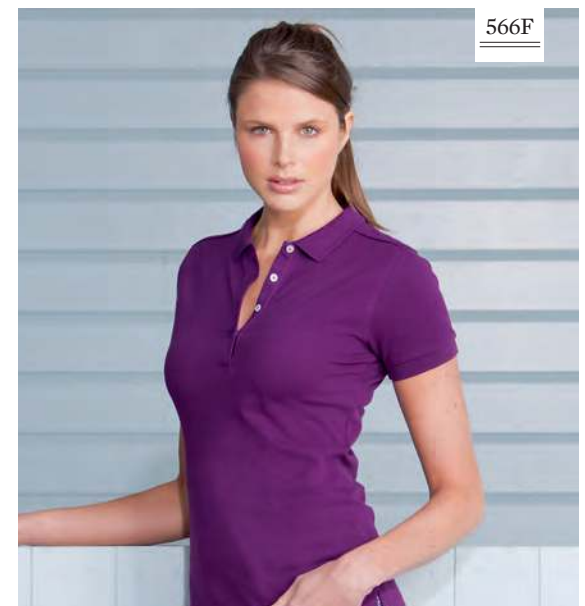
At Russell we offer all 3 fabrics, so simply choose the one that's right for you.

566 Stretch Polo

New



566M



566F

Our new Stretch Polo turns heads

It's not by chance that our newest polo is also our best-looking polo ever. Our design team set out to create something truly outstanding. They've ensured that it's cut superbly and has a myriad stylish little details.



Hey, good looking

Check out the contrast buttons, short leaf collar, that self-colour fabric strip along the shoulder, the narrower placket – not to mention the 4 button placket on the female style that adds a distinctively feminine touch. And the official Lycra® fibre ensures that it keeps those good looks for longer.

Check the details

Men's - 566M



- 1 Beautifully soft handfeel
- 2 Slim fit
- 3 Ribbed cuffs
- 4 Contrast buttons
- 5 Short leaf collar
- 6 Strip of self colour fabric along shoulder seam
- 7 Shorter side vents with herringbone tape

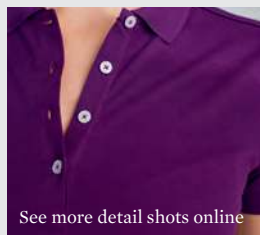
Ladies' - 566F



- 1 Beautifully soft handfeel
- 2 Slim Fit
- 3 Ribbed cuffs
- 4 Contrast buttons
- 5 Short leaf collar
- 6 Strip of self colour fabric along shoulder seam
- 7 Shorter side vents with herringbone tape
- 8 Slimmer, 4 button placket
- 9 Longer length



LYCRA® is a trademark of INVISTA



See more detail shots online

Get more online

- 360 shots
- Full product spec
- Imagery
- Colour/Size & Fabric Guides

www.russelleurope.com

Fact check



Russell's newest, best looking polo ever will turn heads.

PRODUCT

R-566M-0 Men's Stretch Polo

R-566F-0 Ladies' Stretch Polo

SIZES

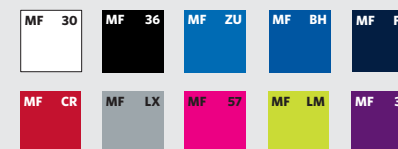


S-3XL



XS-2XL

COLOURS



MATERIAL:

95% Cotton/5% Lycra®



LAUNDRY CARE:

Suitable for 40°C machine wash and tumble dry



WEIGHT:

White: 205g/m²
Colours: 210g/m²



ORIGIN:

Bangladesh



PACKING:

Pack 6/ Carton 36

Where will you see it?

- Cafes, Bars and Restaurants
- Health clubs/Spas
- Retail
- Travel
- Events and Exhibitions
- Sales

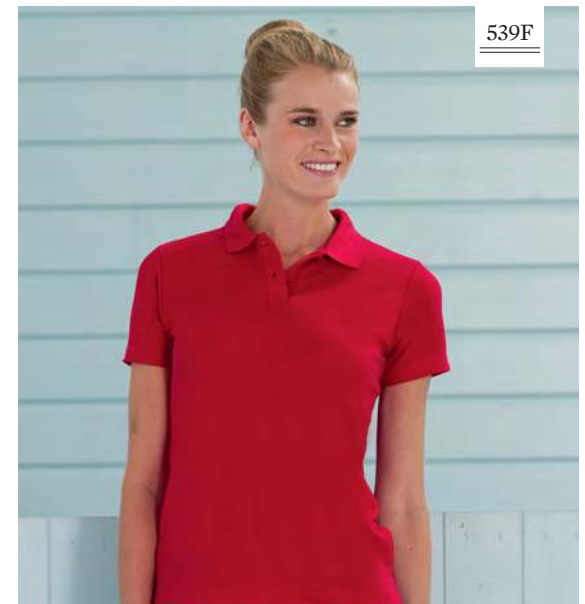
539 Classic PolyCotton Polo



"We wanted a polo that would take decoration really well - the 539 fits the bill"



539M



539F

It's called 'classic' for a reason

The first uniform polo launched in the UK, this is our all-time favourite, tried and tested polo. And there are lots of good reasons why it's as popular today as it ever was.

We call this polo our “classic” because it's an all round performer, ideal for all uses, retaining its colour and shape wash after wash. It's available in a huge range of colours, and sizes to fit everyone from little kids right up to 6XL adults. Smart, versatile and practical, it's no wonder schools love it.

Double twisted for strength (and softness too)

Our classic polo shirt uses a unique double yarn. Two slim fibres are twisted into one thicker yarn. Like a climbing rope, this unique twisted construction creates a very durable and hardwearing fibre. Yet it also gives a softer, more cotton-like feel to the finished fabric, and an extremely stable surface for even the most intricate decoration and embroidery.

Check the details

Men's - 539M



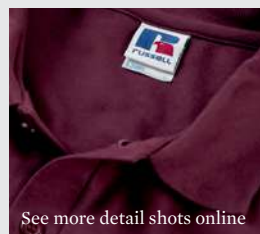
Ladies' - 539F



Children's - 539B



- 1 Neck tape for wearer comfort and durability
- 2 Classic style flat knit cuffs (R-539M-0, R-539B-0)
- 3 Open sleeve with twin needle hem (R-539F-0)
- 4 Spare button in side seam
- 5 Reinforced shoulder seams
- 6 Twin needle hem at bottom for added stability
- 7 Fitted feminine waist (R-539F-0)
- 8 Name label (R-539B-0)



See more detail shots online

Get more online

- 360 shots
- Full product spec
- Imagery
- Colour/Size & Fabric Guides

www.russelleurope.com



Fact check



Our classic, tried and tested, double yarn polo shirt that is ideal for all uses, keeping its look and shape, wash after wash – a top all-round performer.

PRODUCT

R-539M-0 Men's Classic PolyCotton Polo

R-539F-0 Ladies' Classic PolyCotton Polo

R-539B-0 Children's Classic PolyCotton Polo

SIZES



XS-6XL



XS-4XL



1-12 years

COLOURS



R-539M-0, 3XL & 4XL available in Black, Bottle Green, Bright Royal, Classic Red, French Navy, Light Oxford and White. 5XL & 6XL available in Bright Royal, French Navy and White. R-539F-0 3XL & 4XL available in Bottle Green, Bright Royal and French Navy.



MATERIAL:

65% polyester/35% ring spun cotton pique



LAUNDRY CARE:

Suitable for 40°C machine wash and tumble dry



WEIGHT:

White: 210g/m²
Colours: 215g/m²



ORIGIN:

Bangladesh



PACKING:

539M - Pack 6/ Carton 72 (2XL-6XL Carton 36)
539F - Pack 6/ Carton 36
539B - Pack 6/ Carton 72

Where will you see it?

- Retail
- Logistics
- Warehousing
- Hospitality
- Local Authority
- Promotional Merchandise
- Schools
- Horticulture/Agriculture

577 Ultimate Cotton Polo



Preshrunk for a lasting fit

When only 100% cotton will do, our 577 Ultimate Cotton Polo is the natural choice. Our fabric is pre-washed so it will hold its size and shape for longer – making it extremely well suited to team wear.

Back in the 1920s the piqué knit cotton used in polo shirts was at the cutting edge of performance fabrics for sportswear. While sports clothing has evolved, traditional piqué still makes a very comfortable garment for everyday use.

Ours is a superior double-tuck version, with a characteristic honeycomb structure on the face.

Finer surface, softer handfeel

We use finer, thinner yarns along with the double-tuck pattern to create an exceptionally stable fabric with a very dense knit. The result is a softer hand-feel and a finer surface that's ideal for more detailed embroidery.

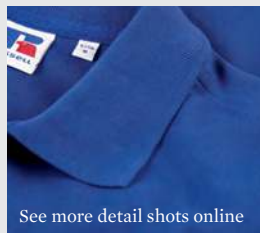
Check the details

Men's – 577M

Ladies' – 577F



- 1 Pre-shrunk and suitable for wash up to 60°C
- 2 Contemporary cut
- 3 Herringbone neck tape for comfort and durability
- 4 Side vents with internal herringbone taping for added stability and better fit
- 5 Modern style flat knit cuffs (R-577M-0)
- 6 Open sleeve with twin needle hem (R-577F-0)
- 7 Reinforced shoulder seams
- 8 Spare button in side seam



See more detail shots online

Get more online

- 360 shots
- Full product spec
- Imagery
- Colour/Size & Fabric Guides

www.russelleurope.com

Fact check



More than just a standard – our 577 has everything you would expect from a top of the range polo.

PRODUCT

R-577M-0 Men's Ultimate Cotton Polo

R-577F-0 Ladies' Ultimate Cotton Polo

SIZES

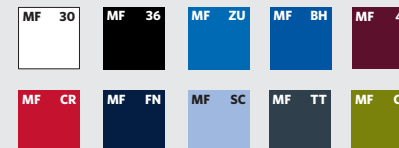


XS-4XL



XS-2XL

COLOURS



MATERIAL:

100% combed ring spun cotton



LAUNDRY CARE:

Suitable for 60°C machine wash and tumble dry



WEIGHT:

White: 210g/m²
Colours: 215g/m²



ORIGIN:

Bangladesh



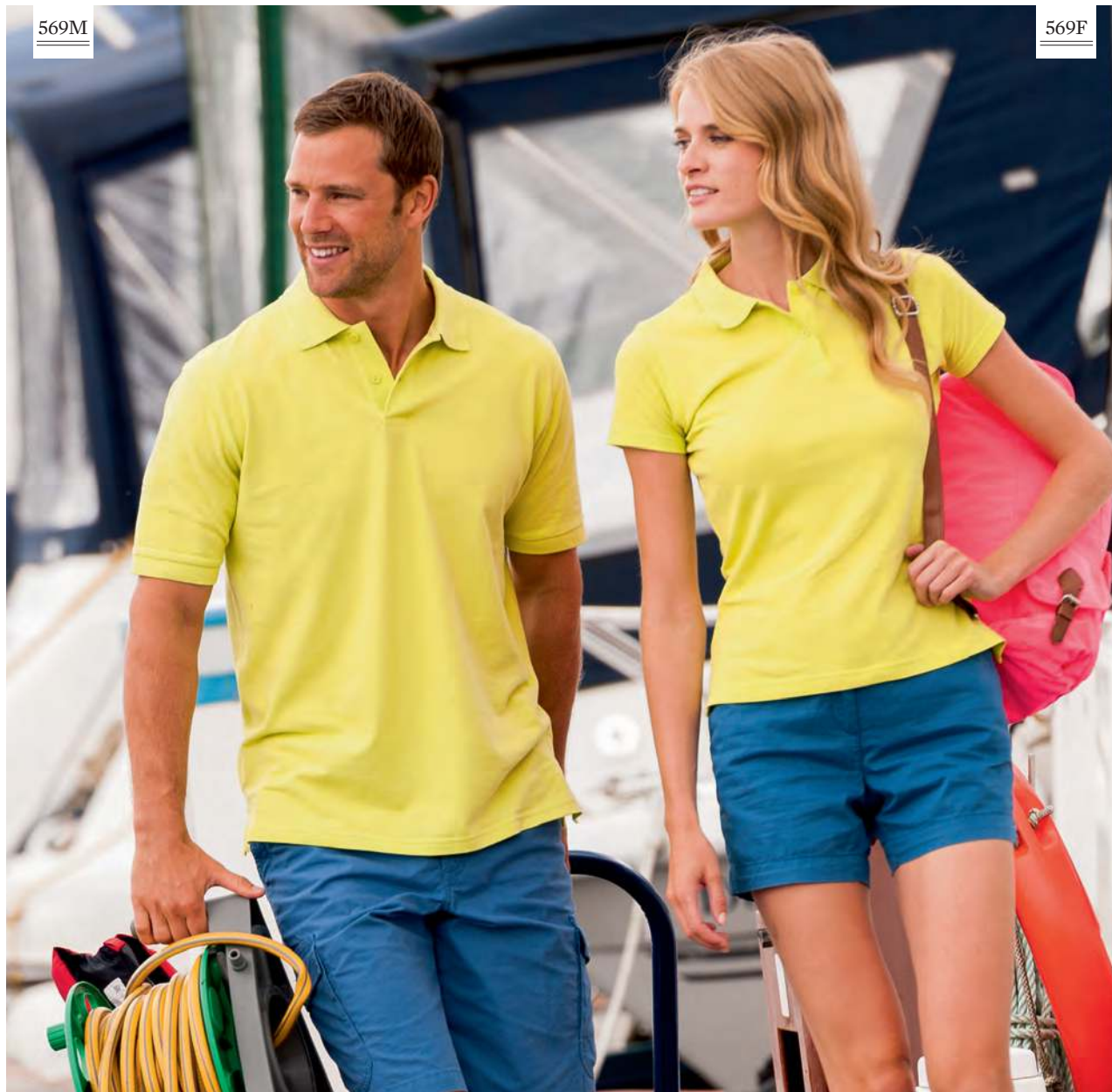
PACKING:

Pack 6/Carton 36

Where will you see it?

- Retail
- Sales
- Hospitality
- Front of House
- Group Travel
- Sport/Leisure Centres
- Promotional Merchandise
- Corporate Events

569 Classic Cotton Polo



Check the details

Men's - 569M

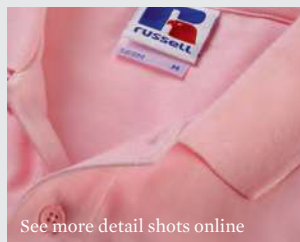


- 1 Neck tape for wearer comfort and durability
- 2 Side vents for ease of fit
- 3 Classic style flat knit cuffs (R-569M-0)
- 4 1x1 rib cuffs (R-569L-0)
- 5 Open sleeve with twin needle hem (R-569F-0)
- 6 Reinforced shoulder seams
- 7 Twin needle hem at bottom for added stability
- 8 Spare button in side seam

Ladies' - 569F



Long Sleeve - 569L



See more detail shots online



Get more online

- 360 shots
- Full product spec
- Imagery
- Colour/Size & Fabric Guides

www.russelleurope.com

Fact check



Our 569 cotton polo delivers on price without stinting on quality.

PRODUCT

R-569M-0 Men's Classic PolyCotton Polo
R-569F-0 Ladies' Classic PolyCotton Polo
R-569L-0 Long Sleeve Classic PolyCotton Polo

SIZES

R-569M-0



XS-4XL

R-569F-0



XS-2XL

R-569L-0



XS-2XL

COLOURS



R-569M-0 XS available in French Navy and White. 3XL & 4XL available in Black, French Navy and White. R-569L-0 available in White, Black, Light Oxford, Classic Red and French Navy, XS available in French Navy and White.



MATERIAL:

100% ring spun cotton pique



LAUNDRY CARE:

Suitable for 40°C machine wash and tumble dry



WEIGHT:

White: 195g/m²
 Colours: 200g/m²



ORIGIN:

Bangladesh/Cambodia



PACKING:

Pack 6/ Carton 36

Where will you see it?

- Retail
- Sales
- Hospitality
- Front of House
- Group Travel
- Sport/Leisure Centres
- Promotional Merchandise
- Corporate Events

588 Pima Cotton Polo



588F

588M

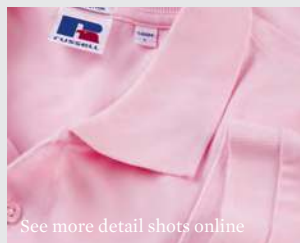
Check the details

Men's – 588M



- 1 Neck tape for comfort and durability
- 2 Side vents with internal herringbone taping for added stability and better fit
- 3 Modern style flat knit cuffs (R-588M-0)
- 4 Open sleeve with twin needle hem (R-588F-0)
- 5 Reinforced shoulder seams
- 6 Spare button in side seam

Ladies' – 588F



See more detail shots online



Get more online

- 360 shots
- Full product spec
- Imagery
- Colour/Size & Fabric Guides

www.russelleurope.com

Fact check



Satisfying your need for luxury and outstanding quality needn't come at a great cost. Made from 100% pima cotton – affordable luxury.

PRODUCT

R-588M-0 Men's Pima Cotton Polo

R-588F-0 Ladies' Pima Cotton Polo

SIZES



XS-2XL



XS-2XL

COLOURS



MATERIAL:
100% pima cotton



LAUNDRY CARE:
Suitable for 40°C wash and tumble dry



WEIGHT:
White: 185g/m²
Colours: 190g/m²



ORIGIN:
Bangladesh



PACKING:
Pack 3/Carton 24

Where will you see it?

- Retail
- Sales
- Hospitality
- Promotional Merchandise
- Corporate Events
- Sports

599 Hardwearing PolyCotton Polo



"This is perfect for workwear, a real quality garment."

599M

599B

Children's
Hardwearing
PolyCotton Polo

Check the details

599

- Neck tape for added comfort and durability
- Side vents for ease of fit
- Flat knit collar and cuffs with double ripple effect
- Reinforced shoulder seams
- Twin needle hem at bottom for added stability
- Spare button in side seam
- Name label (R-599B-0)

Fact check



The hardwearing, (almost) indestructible all-round polo – the professional choice.

PRODUCT

R-599M-0 Adult Hardwearing PolyCotton Polo

R-599B-0 Children's Hardwearing PolyCotton Polo

SIZES

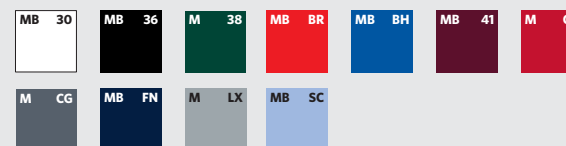


XS-6XL



3-12 years

COLOURS



R-599M-0 5XL & 6XL available in Bottle Green, Bright Royal, French Navy and White. R-599B-0 available in all colours except Bottle Green, Classic Red, Convoy Grey and Light Oxford



MATERIAL:

65% polyester/
35% ring spun cotton pique



WEIGHT:

White: 210g/m², Colours: 215g/m²



PACKING:

Pack 6/ Carton 36



LAUNDRY CARE:

Suitable for 60°C wash and tumble dry



ORIGIN:

Egypt/Bangladesh

Where will you see it?

- Rail/Airports
- Logistics
- Warehousing
- Local Authority
- Sport/Leisure Centres
- Construction/Building
- Horticulture/Agriculture
- Schools

011 Heavy Duty Cotton Polo



Check the details

011

- Double layered shoulder panels and twin needle stitching at armhole for additional strength
- Reinforcements on placket and side vents
- Collar stand for superior comfort and stability
- Flat knit collar and cuffs with single ripple effect
- Chest pocket
- Locker patch for internal identification
- Plastic-coated metal buttons, spare button in side seam
- Twin needle hem at bottom for added stability

Fact check



Our hard wearing 100% cotton polo, specifically designed for the workplace combining exceptional durability and comfort.

PRODUCT

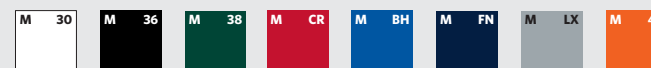
R-011M-0 Heavy Duty Cotton Polo

SIZES



XS-4XL

COLOURS



MATERIAL:

100% ring spun cotton pique



LAUNDRY CARE:

Suitable for 60°C wash and tumble dry



WEIGHT:

215g/m²



ORIGIN:

Pakistan



PACKING:

Pack 3/ Carton 36

Where will you see it?

- Emergency Services
- Rail/Airports
- Logistics
- Warehousing
- Local Authority
- Construction/Building
- Horticulture/Agriculture



265M
Authentic
Hooded Sweat
See page 83

266F
Authentic Zipped
Hooded Sweat
See page 83

262
Authentic
Sweatshirt
See page 81

CHAPTER 5

Sweatshirts



Invented by Benjamin Russell in 1920

We didn't just perfect the sweatshirt, we invented it. Way back in 1920, in Alexander City, Alabama, our company's founder Benjamin Russell had the bright idea to introduce the first cotton sweat to replace the considerably less comfy woollen garments that were commonly used for sport and exercise at the time.

Moving with the times

When Benjamin Russell invented the sweatshirt, it was made from 100% cotton. Since then fibre technology has moved on in leaps and bounds and so have we. Our modern sweatshirts use blends of cotton and polyester to benefit from the qualities of both fabrics.

Our 50/50 is a well established favourite fabric, giving high durability and colour fastness. For our Heavy Duty and Authentic Sweatshirt ranges we chose a cotton rich mix, with 80% combed cotton and 20% polyester.



Contemporary styling

Just as technology moves on, so does fashion. Benjamin Russell might be surprised by some of the details featured in the latest incarnation of his invention. But we know he'd appreciate the quality and attention to detail.

We're constantly updating the range, adding useful features – like flat drawcords, buttonhole eyelets and MP3 earphone access.

The spirit of the original

In 2013 we started another new chapter in the history of our sweatshirts. Combining the spirit of the original with the latest styling and fabric technology, the launch of the Russell Authentic sweatshirts has been a huge success. Great for all kinds of team wear, including the education market, clubs and promotions, the Authentic Sweatshirts are instant classics.





266F
Ladies' Authentic
Zippered Hood
See page 83

262 Authentic Sweatshirt



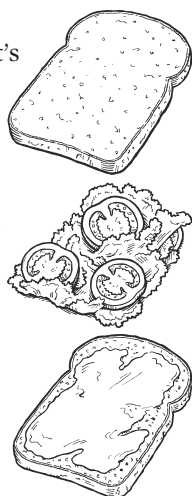
Old school favourite

It's funny how attached we can grow to a favourite sweatshirt.

Just about everybody has one, and most of us have had one for years. It's always good to know when we unveil our latest styles that one day they'll be someone's old favourite.

Built like a sandwich (only softer and lovelier)

Russell Authentic sweats are a bit like a classic sandwich – built in three layers. On the inside a fluffy mix of 50% cotton and 50% polyester gives comfort and warmth. A middle layer that's 100% polyester adds bulk. The outer layer is 100% cotton which feels good – and gives the best surface for decoration.

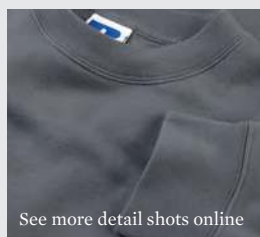


Check the details

262M



- ❶ Set-in sleeve
- ❷ Straighter cut for contemporary look
- ❸ Wider hem and cuff constructions
- ❹ Slimmer shoulders and leaner arms
- ❺ Coverseamed armholes, cuffs and hem
- ❻ Herringbone neck tape
- ❼ Side seams improve fit



See more detail shots online

Get more online

- 360 shots
- Full product spec
- Imagery
- Colour/Size & Fabric Guides

www.russelleurope.com

Fact check



New fabric, new cut, new features. Our “Authentic Sweatshirt” is a traditional set in sleeve sweat in a contemporary design.

PRODUCT

R-262M-0 Authentic Sweatshirt

SIZES



XS-3XL

COLOURS



MATERIAL:

80% combed ring spun cotton/20% polyester (3 layer fabric)



LAUNDRY CARE:

Suitable for 40°C wash and low temperature tumble dry



WEIGHT:

280g/m²



ORIGIN:

Cambodia



PACKING:

Pack 6/Carton 36

Where will you see it?

- Logistics
- Warehousing
- Local Authority
- Sport/Leisure Centres
- Promotional Merchandise
- Colleges/Universities
- Construction/Building
- Group Travel

265 Authentic Hooded Sweat



266 Authentic Zipped Hood



Check the details

265M/265F

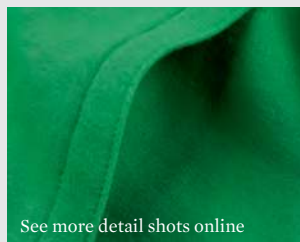


- 1 Contemporary fit & modern design
- 2 Straighter cut for contemporary look (R-265M-O)
- 3 Contemporary, feminine fit (R-265F-O)
- 4 Flat, chunky drawcords with buttonhole eyelets
- 5 MP3 earphone access
- 6 Double layer hood with coverseamed drawcord channel
- 7 Wider hem and cuff constructions
- 8 Slimmer shoulders and leaner arms with front facing shoulder seams
- 9 Coverseamed armholes, cuffs and hem
- 10 Herringbone neck tape

266M/266F



- 1 Contemporary fit & modern design
- 2 Straighter cut for contemporary look (R-266M-O)
- 3 Contemporary, feminine fit (R-266F-O)
- 4 YKK Metal (Antique Silver) Full Zip
- 5 Kissing (covered) zip for full cross body decoration
- 6 Flat, chunky drawcords with buttonhole eyelets
- 7 Double layer hood with coverseamed drawcord channel
- 8 Wider hem and cuff constructions
- 9 Slimmer shoulders and leaner arms with front facing shoulder seams
- 10 Coverseamed armholes, cuffs and hem
- 11 Herringbone neck tape
- 12 MP3 earphone access



See more detail shots online



Get more online

- 360 shots
- Product Video
- Full Product spec
- Imagery
- Colour/Size & Fabric Guides

www.russelleurope.com

Fact check



It's all about team spirit! Premium fabric, contemporary fit and modern design revive the original spirit of the Sweatshirt now available in a female style.

PRODUCT

- R-265M-O** Men's Authentic Hooded Sweat
R-265F-O Ladies' Authentic Hooded Sweat
R-266M-O Men's Authentic Zipped Hooded Sweat
R-266F-O Ladies' Authentic Zipped Hooded Sweat

SIZES



XS-3XL



XS-XL

COLOURS – R-265M-O & R-265F-O



COLOURS – R-266M-O & R-266F-O



MATERIAL:

80% combed ring spun cotton/20% polyester (3 layer fabric)



LAUNDRY CARE:

Suitable for 40°C wash and low temperature tumble dry



WEIGHT:

280g/m²



ORIGIN:

Cambodia



PACKING:

Pack 3/ Carton 24

Where will you see it?

- Retail
- Sport/Leisure Centres
- Promotional Merchandise
- Colleges/Universities
- Schools
- Sports
- Front of House
- Group Travel

762 Classic Sweatshirt



762M



762B

Children's
Classic
Sweatshirt

Check the details

762M



- 1 Tubular body construction for added stability
- 2 1x1 rib trim with elastane on hem and cuffs
- 3 Herringbone neck tape for comfort and stability
- 4 SpotShield™ stain protection
- 5 Name label (R-762B-0)



Children's - 762B



See more detail shots online



Get more online

- 360 shots
- Full product spec
- Imagery
- Colour/Size & Fabric Guides

www.russelleurope.com

Fact check



Our iconic, classic sweatshirt, tried and tested over many years – one of the leading garments in its class.

PRODUCT

R-762M-0 Classic Sweatshirt

R-762B-0 Children's Classic Sweatshirt

SIZES

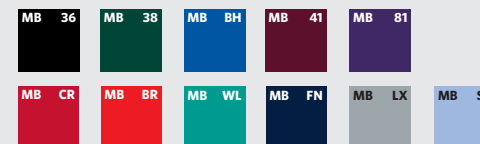


XS-4XL



1-12 years

COLOURS



* R-762M-0 3XL & 4XL available in Bright Royal, Bottle Green and French Navy



MATERIAL:

50% combed ring spun cotton/50% polyester



LAUNDRY CARE:

Suitable for 40°C wash and tumble dry



WEIGHT:

295g/m²



ORIGIN:

Pakistan



PACKING:

Pack 6/ Carton 36

Where will you see it?

- Logistics
- Warehousing
- Local Authority
- Construction/Building
- Horticulture/Agriculture
- Schools
- Rail/Airports
- Sport/Leisure Centres

272 V-Neck Sweatshirt



273 V-Neck Cardigan



Check the details

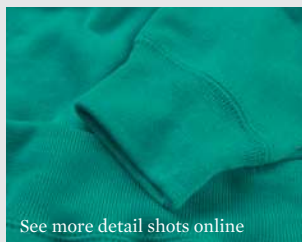
272M/272B



273M/273B



- ① Ring spun cotton for softer hand feel and superior decoration
- ② Outstanding performance – wash after wash
- ③ Set-in sleeves and side seams
- ④ Side seam pockets (R-273M-O, R-273B-O)
- ⑤ Name label (R-272B-O, R-273B-O)



See more detail shots online



Get more online

- 360 shots
- Full product spec
- Imagery
- Colour/Size & Fabric Guides

www.russelleurope.com

Fact check



Sisters to the iconic 762, these styles combine the smartness of a pullover/cardigan with the style and comfort of a sweat. Ideal to wear with polo shirt, open neck shirt or shirt & tie.

PRODUCT

R-272M-O Adult V-Neck Sweatshirt
R-272B-O Children's V-Neck Sweatshirt
R-273M-O Adult Sweatshirt Cardigan
R-273B-O Children's Sweatshirt Cardigan

SIZES

R-272M-O



XS-2XL

R-273M-O



XS-XL

R-272B-O & R-273B-O



3-12 years

COLOURS



R-272M-O 2XL available in Black, Bottle Green, Bright Royal and French Navy.



MATERIAL:

50% combed ring spun cotton/50% polyester



LAUNDRY CARE:

Suitable for 40°C wash and low temperature tumble dry



WEIGHT:

295g/m²



ORIGIN:

Pakistan



PACKING:

272 - Pack 3/ Carton 36
 273 - Pack 3/ Carton 24

Where will you see it?

- Emergency Services
- Logistics
- Warehousing
- Local Authority
- Construction/Building
- Schools

575 Hooded Sweatshirt



575M

575B

Children's
Hooded
Sweatshirt

Check the details

575

- Contemporary construction of shoulders, sleeves and hem
- Straighter cut for contemporary look
- Flat, chunky drawcord (R-575M-0)
- Double layer hood
- Cover seamed drawcord channel (R-575M-0)
- Herringbone necktape
- Kangaroo pocket with bartacks



Fact check



The next generation of an old favourite: The 575 Hoodie has been given a major overhaul in cut, design features and colour palette.

PRODUCT

R-575M-0 Hooded Sweatshirt

R-575B-0 Children's Hooded Sweatshirt

SIZES



XS-2XL



3-12 years

COLOURS



MATERIAL:

50% combed ring spun cotton/
50% polyester



WEIGHT:

295g/m²



PACKING:

Pack 6/ Carton 24



LAUNDRY CARE:

Suitable for 40°C wash and low
temperature tumble dry



ORIGIN:

Pakistan

Where will you see it?

- Retail
- Front of House
- Group Travel
- Local Authority
- Promotional Merchandise
- Corporate Events
- Colleges/Universities
- Schools

750 Sweat Pants



750M

750B

Children's
Sweat
Pants

Check the details

750

- Elasticated waistband and leg ends
- Drawcord (R-750M-0)
- No drawcord in line with health and safety legislation (R-750B-0)
- Side pockets



Fact check



Our easy care sweat pants with sizing that will cater for all from tumbling tots through to active adults.

PRODUCT

R-750M-0 Sweat Pants

R-750B-0 Children's Sweat Pants

SIZES



S-XL



3-12 years

COLOURS



Adult sizes available in all colours except bright royal.

R-750M-0 - WAIST SIZES

	S	M	L	XL
UK (inches)	30	32	34	36
EUROPE	46	48	50	52



MATERIAL:

50% combed ring spun cotton/
50% polyester



WEIGHT:

295g/m²



PACKING:

Pack 6/ Carton 36



LAUNDRY CARE:

Suitable for 40°C wash and low
temperature tumble dry



ORIGIN:

Pakistan

Where will you see it?

- Sport/Leisure Centres
- Schools

012 Heavy Duty Collar Sweatshirt



013 Heavy Duty Crew Neck Sweatshirt



Check the details

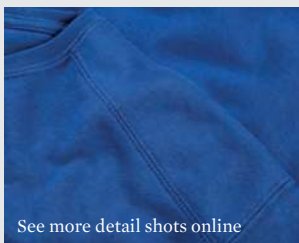
012M



013M



- ❶ Double layered shoulder panels
- ❷ Panelled construction for better fit and flexibility
- ❸ Drop tail and compact 1x1 ribbed hem for perfect fit and protection against wind and chill
- ❹ 1x1 rib trim with elastane on cuffs
- ❺ Collar stand for superior comfort and stability
- ❻ SpotShield™ stain resistant coating
- ❼ Plastic-coated metal buttons, spare button in side seam (R-012M-0)
- ❽ Locker patch for internal identification
- ❾ Elasticated pen holder on top sleeve
- ❿ Back neck tape



See more detail shots online



Get more online

- 360 shots
- Full product spec
- Imagery
- Colour/Size & Fabric Guides

www.russelleurope.com

Fact check



A true workwear sweatshirt that combines hard wearing material with a host of design features that reflect the needs of the more physically demanding workplace.

PRODUCT

R-012M-0 Heavy Duty Collar Sweatshirt

R-013M-0 Heavy Duty Crew Neck Sweatshirt

SIZES



XS-4XL

COLOURS



MATERIAL:

80% combed ring spun cotton/
20% polyester



LAUNDRY CARE:

Suitable for 60°C wash
and tumble dry



WEIGHT:

300g/m²



ORIGIN:

Pakistan



PACKING:

Pack 3/Carton 24

Where will you see it?

- Emergency Services
- Rail/Airports
- Logistics
- Warehousing
- Construction/Building
- Horticulture/Agriculture



870M
Full Zip
Outdoor Fleece
See page 95

872F
Outdoor
Fleece Gilet
See page 97

CHAPTER 6

Fleece



The classic winter warmer

Indoors or out, the fleece is probably the easiest, most versatile garment to pull on for instant warmth. It's still a relatively new product category that really exploded in the 90s, but since we launched our own range we haven't looked back.

870 Full Zip Outdoor Fleece

870F

870M

"It looks very smart as part of a team uniform."

870B

Children's Full Zip Outdoor Fleece



874 Quarter Zip Outdoor Fleece

874M

874B

Children's Quarter Zip Outdoor Fleece





russett

Another first from Russell

They're comfortable, cosy and give you protection against the wind and the chill. What's not to like about these staples of the workwear wardrobe?

Driven by consumer demand, Russell was one of the first major brands to extend from polos, T-shirt and sweats to offer a range of fleeces. And since we first introduced them, they've been in constant demand.

Our modern fleece fabrics are much more compact than traditional materials, but they still provide all the protection you need against wind and chill. And they give a much smoother surface – so they're ideal for decoration.

A slimmer, sleeker fleece

Even an exceptionally comfortable, cosy outdoor fleece can be sleek and smart.

In 2007/8 we tailored our outdoor fleeces to give them more shape and a better fit. Our panelled construction gives a slimmer, sleeker look that's a subtle reminder of the fleece's sportswear heritage.

Check the details

Men's – 870M

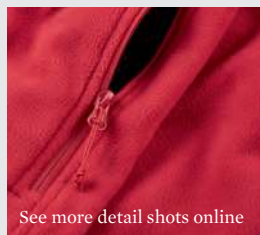


Ladies' – 870F



- ❶ Cadet collar
- ❷ Side pockets with reversed zips and inner mesh lining
- ❸ Cord pulls on all zips
- ❹ Bungee cord in hem (R-870M-O, R-870F-O, R-874M-O)
- ❺ 1/4 zip (R-874M-O, R-874B-O)

Men's – 874M



See more detail shots online

Get more online

- 360 shots
- Full Product spec
- Imagery
- Colour/Size & Fabric Guides

www.russelleurope.com

Fact check



Outdoor fleeces don't need to be bulky. Our outdoor fleeces keep you warm and look good at the same time.

PRODUCT

R-870M-O Men's Full Zip Outdoor Fleece
R-870F-O Ladies' Full Zip Outdoor Fleece
R-870B-O Children's Full Zip Outdoor Fleece

SIZES



XS-4XL



XS-2XL



3-12 years

PRODUCT

R-874M-O Men's Quarter Zip Outdoor Fleece
R-874B-O Children's Quarter Zip Outdoor Fleece

SIZES



XS-2XL



3-12 years

COLOURS



MATERIAL:

100% polyester anti-pill fleece



LAUNDRY CARE:

Suitable for 40°C wash and tumble dry



WEIGHT:

320 g/m²



ORIGIN:

China



PACKING:

Pack 3/ Carton 24

Where will you see it?

- Emergency Services
- Rail/Airports
- Logistics
- Warehousing
- Sport/Leisure Centres
- Promotional Merchandise
- Corporate Events
- Schools

872 Outdoor Fleece Gilet



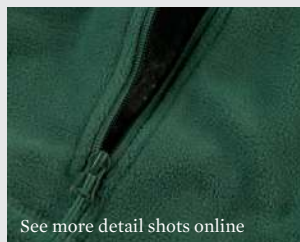
Check the details

Men's - 872M



- 1 Cadet collar
- 2 Side pockets with reversed zips and inner mesh lining
- 3 Cord pulls on all zips
- 4 Bungee cord in hem

Ladies' - 872F



See more detail shots online



Get more online

- 360 shots
- Full Product spec
- Imagery
- Colour/Size & Fabric Guides

www.russelleurope.com

Fact check



Our outdoor fleece gilet is probably the best looking fleece ever made (especially the ladies version).

PRODUCT

R-872M-0 Men's Outdoor Fleece Gilet
R-872F-0 Ladies' Outdoor Fleece Gilet

SIZES

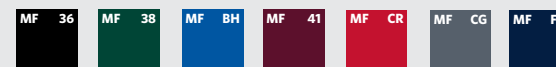


XS-2XL



XS-2XL

COLOURS



MATERIAL:

100% polyester anti-pill fleece



LAUNDRY CARE:

Suitable for 40°C wash and tumble dry



WEIGHT:

320 g/m²



ORIGIN:

China



PACKING:

Pack 3/ Carton 24

Where will you see it?

- Emergency Services
- Rail/Airports
- Logistics
- Warehousing
- Sport/Leisure Centres
- Promotional Merchandise
- Corporate Events
- Schools

880 Full Zip Microfleece



883 Fitted Full Zip Microfleece



881 Quarter Zip Microfleece



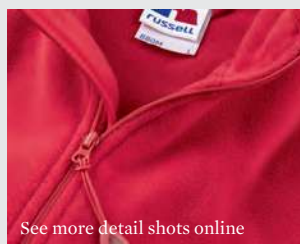
Check the details

Men's – 880M/881M



- ❶ Cadet collar with zip protector
- ❷ Zipped side pockets (R-880M-0, R-883F-0)
- ❸ Side vents and panelled construction for comfortable fit
- ❹ Locker patch

Ladies' – 883F



See more detail shots online



Get more online

- 360 shots
- Full Product spec
- Imagery
- Colour/Size & Fabric Guides

www.russelleurope.com

Fact check



Ideal for indoors and outdoors. Our microfleece keeps you warm and comfortable whilst you're busy and active.

PRODUCT

R-880M-0 Men's Fitted Full Zip Microfleece
R-883F-0 Ladies' Fitted Full Zip Microfleece
R-881M-0 Men's Quarter Zip Microfleece

SIZES

R-880M-0



XS-2XL

R-881M-0



S-2XL

R-883F-0



XS-XL

COLOURS



MATERIAL:

100% polyester anti-pill fleece



LAUNDRY CARE:

Suitable for 40°C wash and tumble dry



WEIGHT:

190g/m²



ORIGIN:

China



PACKING:

Pack 3/ Carton 24

Where will you see it?

- Emergency Services
- Rail/Airports
- Logistics
- Warehousing
- Sport/Leisure Centres
- Promotional Merchandise
- Corporate Events
- Schools



140 & 141
Soft Shell
Jacket & Gilet
See page
105 & 107

CHAPTER 7

Jackets



Setting new standards in jackets

Once upon a time (and a surprisingly recent time it was) the market for corporate and teamwear jackets still featured quaintly old-fashioned garments like the mac and the executive anorak. We changed all that in 2006, and today we offer two high-tech modern categories – softshells and all-round jackets.



870
Full Zip
Outdoor Fleece
See page 95

014
Heavy
Duty Gilet
See page 119

Imitated everywhere

They say imitation is the sincerest form of flattery. So our Classic Softshell Jackets can consider themselves well and truly flattered. Ours is a much-imitated garment in the industry.

But we just have to accept that's what happens when you successfully combine practicality with value – and add lots of lovely little details. Especially as they're water resistant, windproof, versatile, breathable and good looking too.



All-round performers



Our two stylish PU coated jackets are perfect for a wide range of uses. With critically taped seams for full weather protection, they offer water resistance to 2000mm and breathability of 2000g/m² per 24 hours.



In the 500 Hydra-Shell the promo jacket comes of age, while the 510 Hydraplus scores particularly highly on contemporary styling and practical design features.

Changing the game again

In 2013 we introduced a whole new kind of softshell. Our SmartSoftshell is a bonded 2-layer softshell – without the waterproof membrane.

They're great for customer facing staff who need to look smart but may have to go outside or step into the cold of a chill room.



140 SoftShell Jacket



Our pioneering softshell

Russell was a real pioneer (yet again) when we introduced softshells into the teamwear and corporate fashion market back in 2006. And the 140 and 141 are the jackets that set the standard.

There's science in every layer

Our outdoor softshell jackets are built in three layers.

The outer layer is a smooth, woven softshell fabric that gives protection from the elements and is great for decoration.

Next to the skin there's a cosy microfleece layer for comfort and warmth.

In between is the internal layer where the real high-tech stuff happens. It's a membrane that lets moisture out but no rain in, for protection and comfort.

Check the details

Men's - 140M



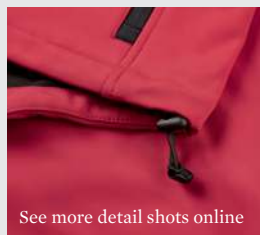
Ladies' - 140F



Children's - 140B



- 1 Side pockets and chest pocket with inner lining, reversed zips and cord pulls
- 2 Full zip with inner storm flap and zip neck protector at collar
- 3 Bungee cord in hem
- 4 Adjustable cuffs
- 5 Drop tail
- 6 Feminine fit (R-140F-0)
- 7 Name label (R-140B-0)
- 8 Fully launderable: 40°C wash and low temperature tumble dry (do not use fabric softeners)



See more detail shots online

Get more online

- 360 shots
- Full Product spec
- Imagery
- Colour/Size & Fabric Guides

www.russelleurope.com

Fact check



This is the softshell jacket that has set the standard in the market - highly water resistant and windproof, versatile and good looking - it performs at every level.

Water Resistant
up to 5000mm



Breathable



Windproof



PRODUCT

R-140M-0 Men's SoftShell Jacket

R-140F-0 Ladies' SoftShell Jacket

R-140B-0 Children's SoftShell Jacket

SIZES



XS-4XL



XS-4XL



3-12 years

COLOURS



R-140M-0 & R-140F-0 3XL & 4XL available in Black, Classic Red, French Navy and Titanium.



MATERIAL:
92% polyester/
8% elastane,
3 layer soft shell fabric



LAUNDRY CARE:
Suitable for 40°C wash and
low temperature tumble dry
(do not use fabric softeners)



WEIGHT:
340g/m²



ORIGIN:
China



PACKING:
Pack 1/ Carton 12

Where will you see it?

- Rail/Airports
- Logistics
- Sales
- Promotional Merchandise
- Corporate Events
- Schools
- Local Authority
- Sports

141 SoftShell Gilet





Check the details

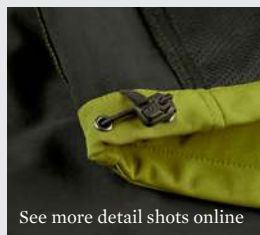
Men's - 141M



Ladies' - 141F



- 1 Side pockets and chest pocket with inner lining, reversed zips and cord pulls
- 2 Full zip with inner storm flap and zip neck protector at collar
- 3 Bungee cord in hem
- 4 Drop tail
- 5 Feminine fit (R-141F-0)
- 6 Fully launderable: 40°C wash and low temperature tumble dry (do not use fabric softeners)



See more detail shots online

Get more online

- 360 shots
- Full Product spec
- Imagery
- Colour/Size & Fabric Guides

www.russelleurope.com

Fact check



This softshell gilet has set new standards for bodywarmers. Highly water resistant and windproof it also delivers on style and warmth coupled with freedom of movement.

Water Resistant
up to 5000mm



Breathable



Windproof



PRODUCT

R-141M-0 Men's SoftShell Gilet

R-141F-0 Ladies' SoftShell Gilet

SIZES



XS-2XL



XS-2XL

COLOURS



MATERIAL:

92% polyester/
8% elastane,
3 layer soft shell fabric



LAUNDRY CARE:

Suitable for 40°C wash and
low temperature tumble dry
(do not use fabric softeners)



WEIGHT:

340g/m²



ORIGIN:

China



PACKING:

Pack 1/ Carton 12

Where will you see it?

- Rail/Airports
- Logistics
- Sales
- Promotional Merchandise
- Corporate Events
- Schools
- Local Authority
- Sports

040 Smart SoftShell Jacket



041 Smart SoftShell Gilet



A new breed of softshell

Our Smart SoftShells give you the comfort and breathability of a fleece with the chill protection and smart appearance of a traditional softshell. A Teflon-branded water repellent finish even provides protection against drizzle and a wipe-clean finish.

Protection from the chill and the wind

With their high level of breathability, our 2-layer Smart SoftShells keep the wearer warm when they're not moving, and dry when they're physically active.

They're perfect for anyone who works indoors or in semi-sheltered areas – where they offer protection against wind and chill.

That's probably why they've already proved so very popular in major supermarkets and car showrooms.

Check the details



- | | |
|---|-----------------------------|
| ① Protection against wind and chill | ⑦ Drop tail |
| ② Higher degree of breathability | ⑧ Backneck Tape |
| ③ Durable Water Repellent DuPont™ Teflon® Coating | ⑨ Bound inside seams on zip |
| ④ Microfleece lining | ⑩ Cadet collar |
| ⑤ 2 zipped pockets | ⑪ MP3 earphone access |
| ⑥ Reverse zippers | |



See more detail shots online

Get more online

- 360 shots
- Full Product spec
- Imagery
- Colour/Size & Fabric Guides

www.russelleurope.com

Fact check



A new style to meet new requirements. Russell Smart SoftShells are smart looking, bonded 2-layer softshells – softshells WITHOUT a membrane, providing a higher degree of breathability.

Highly Breathable



Windproof



PRODUCT

R-040M-0 Men's Smart SoftShell Jacket

R-040F-0 Ladies' Smart SoftShell Jacket

R-041M-0 Men's Smart SoftShell Gilet

R-041F-0 Ladies' Smart SoftShell Gilet

SIZES



XS-3XL



XS-3XL

COLOURS



MATERIAL:

100% polyester knitted softshell outer layer, bonded microfleece inner layer



LAUNDRY CARE:

Suitable for 40°C wash and low temperature tumble dry (do not use fabric softeners)



WEIGHT:

315g/m²



ORIGIN:

China



PACKING:

Pack 1/ Carton 12



Teflon® water repellent coating

Teflon® is a registered trademark of DuPont used under license by INVISTA and its affiliates.

Where will you see it?

- | | |
|----------------------|----------------------------|
| • Retail | • Hospitality |
| • Emergency Services | • Horticulture/Agriculture |
| • Logistics | • Rail/Airports |
| • Warehousing | • Sport/Leisure Centres |

520 Sport Shell 5000 Jacket



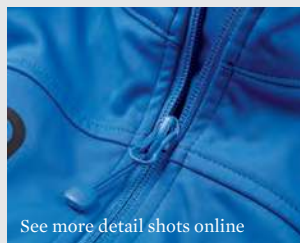
Check the details

Men's – 520M



- ❶ Water resistance to 5000mm and breathability of 5000g/m² per 24 hours (bonded hydrophobic membrane), durable water repellent finish
- ❷ Ergonomic shape – body fit creates microclimate for maximum thermoregulation and moisture transfer
- ❸ Designed for active living: sealed, laser cut pockets with matt waterproof zips on sleeve and chest; internal MP3 inner pocket
- ❹ Adjustable cuffs for comfort and maintenance of personal microclimate; YKK centre zip
- ❺ Fully launderable: 30°C wash (gentle cycle) and low temperature tumble dry

Ladies' – 520F



See more detail shots online



Get more online

- 360 shots
- Full Product spec
- Imagery
- Colour/Size & Fabric Guides

www.russelleurope.com

Fact check



Engineered for high activity. Maximum thermoregulation and excellent moisture transfer make this softshell jacket perfect for active wearer requirements.

Water resistant to 5000mm



Breathable up to 5000g/m² per 24 hours



Windproof



PRODUCT

R-520M-0 Men's Sport Shell 5000 Jacket

R-520F-0 Ladies' Sport Shell 5000 Jacket

SIZES



XS-2XL



XS-2XL

COLOURS



MATERIAL:

Advanced softshell fabric with natural stretch; 3 layer bonded hydrophobic substrate; 100% polyester outer, 100% polyester knitted liner



LAUNDRY CARE:

Suitable for 30°C wash (gentle cycle) and low temperature tumble dry (do not use fabric softeners)



WEIGHT:

250g/m²



ORIGIN:

China



PACKING:

Pack 1/ Carton 12

Where will you see it?

- Sales
- Sport/Leisure Centres
- Promotional Merchandise
- Corporate Events
- Colleges/Universities
- Sports

500 Hydra-Shell 2000 Jacket



Check the details


500M



- 1 Modern fit with matt finish fabric
- 2 Full zip with cord pull, inner storm flap and zip neck protector at collar
- 3 Side pockets with mesh lining
- 4 Adjustable cuffs
- 5 Bungee cord in hem
- 6 Fully lined and soft touch inner collar
- 7 Fully launderable: 30°C wash (gentle cycle) and low temperature tumble dry (do not use fabric softeners)



See more detail shots online

Get more online 

- 360 shots
- Full Product spec
- Imagery
- Colour/Size & Fabric Guides

www.russelleurope.com

Fact check



The promo-jacket has come of age. Water resistant, breathable and with critically taped seams, the Hydra-Shell 2000 is a fully equipped lightweight outdoor jacket.

Water resistant to 2000mm



Breathable up to 2000g/m² per 24 hours



Windproof



PRODUCT

R-500M-O Hydra-Shell 2000 Jacket

SIZES



XS-2XL

COLOURS



MATERIAL:
100% nylon ripstop



LAUNDRY CARE:
Suitable for 30°C wash (gentle cycle) and low temperature tumble dry (do not use fabric softeners)



WEIGHT:
140g/m²



ORIGIN:
China



PACKING:
Pack 1/ Carton 12

Where will you see it?

- Logistics
- Sales
- Local Authority
- Promotional Merchandise
- Corporate Events
- Construction/Building
- Hospitality

510 Hydraplus 2000 Jacket





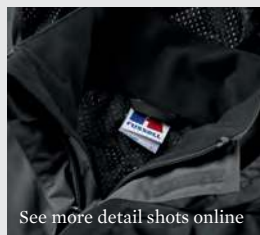
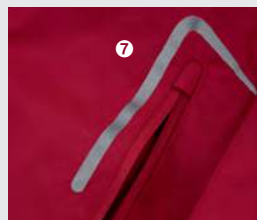
Check the details

Men's - 510M

Ladies' - 510F



- 1 Active fit with articulated elbows and raglan sleeves
- 2 Stowaway 3 piece hood and soft touch inner collar
- 3 Reverse YKK front zip with cord pull; double storm flap with additional velcro closure
- 4 Zipped hand warmer pockets with internal pocket for phone/MP3 and zipped chest pocket (reverse zips with cord pulls)
- 5 Fully lined, with discreet concealed decoration access at hem; bungee cord in hem
- 6 Fully launderable: 30°C wash (gentle cycle) and low temperature tumble dry
- 7 Reflective taping on breast pocket (R-510B-0)
- 8 Name Label (R-510B-0)



Get more online

- 360 shots
- Full Product spec
- Imagery
- Colour/Size & Fabric Guides

www.russelleurope.com

Fact check



Our 510 jacket is pure understatement. Developed to combine everything required from a modern outdoor jacket with a contemporary look, we nevertheless manage to sell it at an entry level price.

Water Resistant
up to 2000mm



Breathable up to
2000g/m² per 24 hours



Windproof



PRODUCT

R-510M-0 Men's Hydraplus 2000 Jacket

R-510F-0 Ladies' Hydraplus 2000 Jacket

R-510B-0 Children's Hydraplus 2000 Jacket

SIZES



XS-4XL



XS-4XL



3-12 years

COLOURS



R-510M-0 & R-510F-0 3XL & 4XL available in Black, Classic Red, French Navy and Titanium.



MATERIAL:
100% nylon taslan



LAUNDRY CARE:
Suitable for 30°C wash (gentle cycle) and low temperature tumble dry (do not use fabric softeners)



WEIGHT:
190g/m²



ORIGIN:
China



PACKING:
Pack 1/ Carton 12

Where will you see it?

- Logistics
- Sales
- Local Authority
- Promotional Merchandise
- Corporate Events
- Construction/Building
- Hospitality
- Schools

018 Workwear Softshell Jacket





Adjustable bungee cord in hem



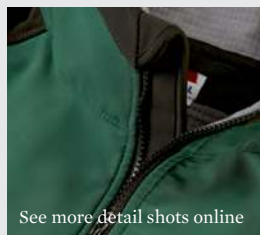
Internal bungee cord

Check the details

018M



- 1 Ergonomic fit with articulated elbows
- 2 One piece shoulder panel, no shoulder seam
- 3 Black contrast panels on shoulders, elbows and back of hem
- 4 Sturdy YKK vislon front zip with pull cord, inner storm flap and zip guard at collar
- 5 2 deep, zipped front pockets
- 6 1 multi compartment pocket
- 7 Cuffs with internal stretch insert for weather protection and comfortable fit
- 8 Adjustable bungee cord in hem
- 9 Decoration access at inner left chest
- 10 Teflon® water repellent coating



See more detail shots online

Get more online

- 360 shots
- Full Product spec
- Imagery
- Colour/Size & Fabric Guides

www.russelleurope.com

Fact check



The Russell softshell jacket for the workplace – with fabric, fit and features that are designed for physical stress and demanding work environments.

Water Resistant
up to 5000mm



Breathable up to
5000g/m² per 24 hours



Windproof



PRODUCT

R-018M-O Workwear Softshell Jacket

SIZES



XS-4XL

COLOURS



MATERIAL:

96% polyester, 4% elastane durable outer fabric with abrasion resistant textured finish; breathable, waterproof membrane; bonded microfleece lining (100% polyester with grid texture)



LAUNDRY CARE:

Suitable for 30°C wash and low temperature tumble dry



WEIGHT:
400g/m²



ORIGIN:
China



PACKING:
Pack 1/ Carton 12



Teflon® water repellent coating

Teflon® is a registered trademark of DuPont used under license by INVISTA and its affiliates.

Where will you see it?

- Emergency Services
- Rail/Airports
- Logistics
- Local Authority
- Construction/Building
- Horticulture/Agriculture

014 Heavy Duty Gilet

014M



Full zip storm flap



Multifunctional chest pocket



Zipped inside pocket



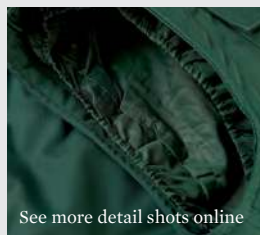
Zipped vertical front pockets

Check the details

014M



- 1 DuPont™ Teflon® fabric protector
- 2 Drop Tail, elasticated gusset at armhole, reinforced hang tag
- 3 Full zip with stormflap, flexi notch at neck
- 4 Right hand side chest pocket with functional multi compartments
- 5 Zipped vertical front pockets and internal A4 document pocket on right hand side
- 6 Spacious, zipped decoration access at left chest



See more detail shots online

Get more online

- 360 shots
- Full Product spec
- Imagery
- Colour/Size & Fabric Guides

www.russelleurope.com

Fact check



The hardwearing outer material makes this warm, wadded gilet most suitable for heavy duty work environments. Versatile pockets provide storage space for all-important items large and small (including A4 documents – unfolded!).

PRODUCT

R-014M-0 Heavy Duty Gilet

SIZES



XS-4XL

COLOURS



MATERIAL:

65% polyester/
35% cotton hardwearing
canvas with 5oz polyester
wadding and 100%
polyester inner lining



LAUNDRY CARE:

Suitable for 60°C wash
and tumble dry



WEIGHT:

260g/m²



ORIGIN:

China



PACKING:

Pack 1/ Carton 12



Teflon® water
repellent coating

Teflon® is a registered trademark of DuPont used under license by INVISTA and its affiliates.

Where will you see it?

- Local Authority
- Construction/Building
- Horticulture/Agriculture

700 Boys' & Girls' Classic Blazer

700F

700M



Check the details

- Easy to launder (40° wash)
- DuPont™ Teflon® fabric protector to repel stains
- Fully lined
- Back vents (R-700M-0)
- Single breasted, 2 button fastening
- 3 external pockets & 2 internal pockets – one zipped, one open
- Slightly fitted for more feminine shape (R-700F-0)
- Name and class label
- Ribbon hanger on back neck
- Chest pocket embroidery access

Fact check



Jerzees Schoolgear gets even smarter, extending its more formal schoolwear range with this classic, fully lined blazer with supersmart tailoring that ticks all the boxes.

PRODUCT

R-700M-0 Boys' Classic Blazer

R-700F-0 Girls' Classic Blazer

SIZES

R-700M-0: chest (to fit)

ins: 28 29 30 31 32 33 34 35 36 37 38 40 42 44 46 48
cm: 71 73 76 79 81 84 86 89 91 94 96 101 106 112 117 122

R-700F-0: chest (to fit)

ins: 27 28 29 30 31 32 33 34 35 36 38 40 42 44 46
cm: 68 71 73 76 79 81 84 86 89 91 96 101 106 112 117

COLOURS



MATERIAL:



100% polyester twill with DuPont™ Teflon® fabric protector finish
100% polyester lining



WEIGHT:

200g/m²



PACKING:

Pack 1/ Carton 12



LAUNDRY CARE:

Suitable for 40° wash and dry cleaning




ORIGIN:

China

Where will you see it?

- Schools

Get more online 

www.russelleurope.com

- 360 Shots
- Imagery
- Full Product spec
- Colour/Size & Fabric Guides



Teflon® is a registered trademark of DuPont used under license by INVISTA and its affiliates.



875 Reversible Jacket

875B



Check the details

- Cadet collar with concealed hood
- Storm flap over front zip
- 2 pockets on each side
- Elasticated cuffs
- Hanging loop and name label
- Machine washable at 40°C
- Reflective tape on front and back
- Easy decoration access at hem



Fact check



Our 5-in-1 children's jacket: showerproof, warm, safe, washable and reversible.

PRODUCT

R-875B-0 Reversible Jacket

SIZES

Age (years):	3-4	5-6	7-8	9-10	11-12
Height (cm):	104	116	128	140	152

COLOURS



MATERIAL:

100% woven polyester on one side/
100% polyester anti-pill fleece on reverse



WEIGHT:

370g/m²



PACKING:

Pack 3/Carton 24



LAUNDRY CARE:

Suitable for 40° wash



ORIGIN:

China

Where will you see it?

- Schools

Get more online

www.russelleurope.com

- 360 Shots
- Imagery
- Full Product spec
- Colour/Size & Fabric Guides

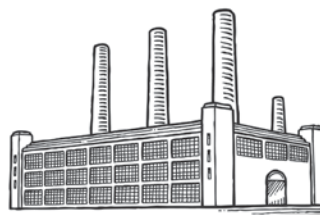


015
Heavy Duty
Trousers
See page 125

262
Authentic
Sweatshirt
See page 81

CHAPTER 8

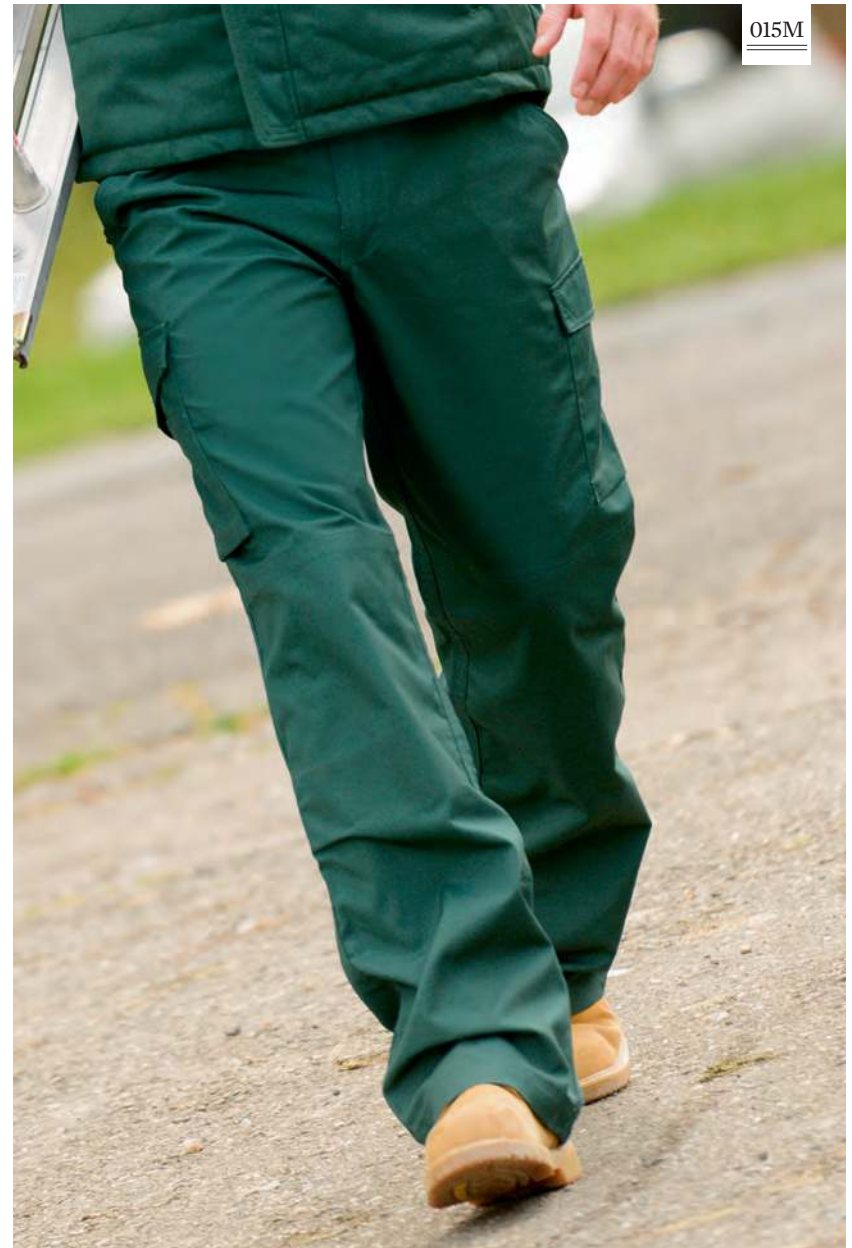
Trousers & Shorts



Legwear at work

Corporate and teamwear isn't all about the top half, and our workwear range includes trousers and shorts that combine perfectly with our jackets and shirts. Choose smart, practical PolyCotton Twill with clever detailing, including a cargo pocket and a dedicated mobile phone pocket. Or for particularly demanding work environments, there's our heavy duty trousers with DuPont™ Teflon® fabric protector.

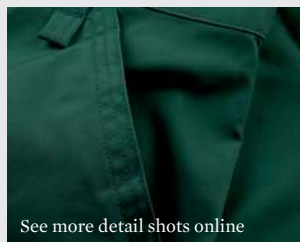
015 Heavy Duty Trousers



Check the details



- ❶ DuPont™ Teflon® fabric protector
- ❷ Triple stitched inner leg seams and pocket openings; reinforced seat area
- ❸ 2 back pockets, one open, one with flap
- ❹ Cargo pockets on both legs, with practical compartments on right leg
- ❺ Mobile phone pouch below waistband
- ❻ YKK zip
- ❼ Internal pockets for knee pads (21cm x 15cm max.)



See more detail shots online



Get more online

- 360 shots
- Full product spec
- Imagery
- Colour/Size & Fabric Guides

www.russelleurope.com

Fact check



Our hardwearing trousers combine contemporary cut with excellent fit and versatile pockets.

PRODUCT

R-015M-0 Heavy Duty Trousers

SIZES

Waist Sizes



UK (inches) 28 / 30 / 32 / 34 / 36 / 38 / 40 / 42 / 44 / 46 / 48

EUROPE 44 / 46 / 48 / 50 / 52 / 54 / 56 / 58 / 60 / 62 / 64

Leg Length

Ins S: 30 / R: 32 / L: 34

cm S: 76 / R: 81 / L: 86

COLOURS



MATERIAL:

65% polyester
35% cotton
hardwearing canvas



WEIGHT:

260g/m²



PACKING:

Pack 1/ Carton 12



LAUNDRY CARE:

Suitable for 60°C wash
and tumble dry



ORIGIN:

China



Teflon® water
repellent coating

Teflon® is a registered trademark of DuPont used under license by INVISTA and its affiliates.

Where will you see it?

- Rail/Airports
- Logistics
- Warehousing
- Local Authority
- Construction/Building
- Horticulture/Agriculture
- Emergency Services

001 PolyCotton Twill Trousers



002 PolyCotton Twill Shorts

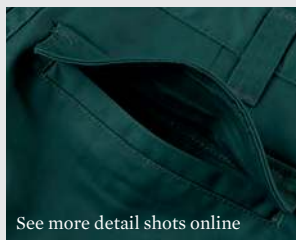


Check the details

001M



- ❶ Expandable waistband for comfortable fit
- ❷ 2 back pockets with flaps
- ❸ Cargo pocket on right leg
- ❹ Mobile phone pocket



See more detail shots online



Get more online

- 360 shots
- Full product spec
- Imagery
- Colour/Size & Fabric Guides

www.russelleurope.com

Fact check



Contemporary designed workwear trousers with an expandable waist for added comfort, suitable for a wide variety of work environments.

PRODUCT

R-001M-O PolyCotton Twill Trousers

R-002M-O PolyCotton Twill Shorts

SIZES

Waist Sizes



UK (inches) 28 / 30 / 32 / 34 / 36 / 38 / 40 / 42 / 44 / 46 / 48

EUROPE 44 / 46 / 48 / 50 / 52 / 54 / 56 / 58 / 60 / 62 / 64

Leg Length - R-001M-O

Ins R: 32 / L: 34

cm R: 81 / L: 86

COLOURS



MATERIAL:
65% polyester/
35% cotton twill



LAUNDRY CARE:
Suitable for 40°C wash and
tumble dry



WEIGHT:
245g/m²



ORIGIN:
China



PACKING:
Pack 1/ Carton 12

Where will you see it?

- Rail/Airports
- Logistics
- Warehousing
- Local Authority
- Construction/Building
- Horticulture/Agriculture
- Emergency Services



RANGE OVERVIEW



Here you'll find all the key facts about our products in one place. It's a handy place to check which sizes, fits and colours are available for any of our garments.

Shirts

Fabric Type/Style	Page No.	Fabric & Weight/Style	Fit	Sizes	Collar (Ins)	Packs/ Carbons	30 White	36 Black	3M Kiaki (Collection)	42 Light Blue	44 Orange	65 Turquoise	81 Purple	BL Blue	BZ Bright Sky	CP Corporate Blue	CR Classic Red	FN French Navy	LM Lime	OD Oxford Blue	SJ Silver	XW Zinc	Y1 Classic Pink	ZT Aztec Blue
Ultimate Stretch		75% Cotton/25% Elastomultiester (Lycra® T400® fibre) 125/130g/m²																						
R-960M-0	13	Men's Long Sleeve Ultimate Stretch Shirt	Fitted	S-4XL	14.5/15 - 19.5***	1/12	●	●																
R-961M-0	13	Men's Short Sleeve Ultimate Stretch Shirt	Fitted	S-4XL	14.5/15 - 19.5***	1/12	●	●																
R-960F-0	13	Ladies' Long Sleeve Ultimate Stretch Shirt	Fitted	XS-4XL	N/A	1/12	●	●																
R-961F-0	13	Ladies' Short Sleeve Ultimate Stretch Shirt	Fitted	XS-4XL	N/A	1/12	●	●																
Herringbone		84% Cotton/16% Polyester Mini Herringbone 125/130g/m²																						
R-962M-0	15	Men's Long Sleeve Herringbone Shirt	Tailored	S-4XL	14.5 - 19.5**	1/12	●	●																
R-963M-0	15	Men's Short Sleeve Herringbone Shirt	Tailored	S-4XL	14.5 - 19.5**	1/12	●	●																
R-962F-0	15	Ladies' Long Sleeve Herringbone Shirt	Fitted	XS-4XL	N/A	1/12	●	●																
R-963F-0	15	Ladies' Short Sleeve Herringbone Shirt	Fitted	XS-4XL	N/A	1/12	●	●																
Oxford		70% Combed Cotton/30% Polyester 130/135g/m²																						
R-922M-0	17	Men's Long Sleeve Tailored Oxford Shirt	Tailored	S-4XL	14.5 - 19.5**	1/12	●	●																
R-923M-0	17	Men's Short Sleeve Tailored Oxford Shirt	Tailored	S-4XL	14.5 - 19.5**	1/12	●	●																
R-932M-0	17	Men's Long Sleeve Oxford Shirt	Classic	S-6XL	14.5 - 21" **	1/12	●	●																
R-933M-0	17	Men's Short Sleeve Oxford Shirt	Classic	S-6XL	14.5 - 21" **	1/12	●	●																
R-932F-0	19	Ladies' Long Sleeve Tailored Oxford Shirt	Tailored	XS-6XL	N/A	1/12	●	●																
R-933F-0	19	Ladies' Short Sleeve Tailored Oxford Shirt	Tailored	XS-6XL	N/A	1/12	●	●																
Ultimate Non-Iron Shirt		100% Cotton Micro Twill 120g/m²																						
R-956M-0	21	Men's Long Sleeve Ultimate Non-Iron Shirt	Classic	S-4XL	14.5 - 19.5**	1/12	●	●																
R-957M-0	21	Men's Short Sleeve Ultimate Non-Iron Shirt	Classic	S-4XL	14.5 - 19.5**	1/12	●	●																
R-958M-0	21	Men's Long Sleeve Tailored Ultimate Non-Iron Shirt	Tailored	S-4XL	14.5 - 19.5**	1/12	●	●																
R-959M-0	21	Men's Short Sleeve Tailored Ultimate Non-Iron Shirt	Tailored	S-4XL	14.5 - 19.5**	1/12	●	●																
R-956F-0	23	Ladies' Long Sleeve Ultimate Non-Iron Shirt	Tailored	XS-4XL	N/A	1/12	●	●																
R-957F-0	23	Ladies' Short Sleeve Ultimate Non-Iron Shirt	Tailored	XS-4XL	N/A	1/12	●	●																
Twill Shirts		100% Cotton Twill 130g/m²																						
R-916M-0	25	Men's Long Sleeve Classic Twill Shirt	Classic	S-4XL	14.5/15 - 19.5***	1/12	●	●																
R-917M-0	25	Men's Short Sleeve Classic Twill Shirt	Classic	S-4XL	14.5/15 - 19.5***	1/12	●	●																
R-916F-0	25	Ladies' Long Sleeve Classic Twill Shirt	Classic	XS-2XL	N/A	1/12	●	●																
R-917F-0	25	Ladies' Short Sleeve Classic Twill Shirt	Classic	XS-2XL	N/A	1/12	●	●																
R-918M-0	27	Men's Roll Sleeve Shirt - Long Sleeve	Fitted	S-4XL	14.5/15 - 19.5***	1/12	●	●																
R-919M-0	27	Men's Roll Sleeve Shirt - Short Sleeve	Fitted	S-4XL	14.5/15 - 19.5***	1/12	●	●																
R-918F-0	27	Ladies' Roll Sleeve Shirt - 3/4 Sleeve	Fitted	XS-2XL	N/A	1/12	●	●																
R-919F-0	27	Ladies' Roll Sleeve Shirt - Short Sleeve	Fitted	XS-2XL	N/A	1/12	●	●																
PolyCotton Poplin		65% Polyester/35% Combed Cotton Poplin 115/110g/m²																						
R-924M-0	31	Men's Long Sleeve Tailored PolyCotton Easy Care Poplin Shirt	Tailored	S-4XL	14.5/15 - 19.5" **	1/12	●	●																
R-925M-0	31	Men's Short Sleeve Tailored PolyCotton Easy Care Poplin Shirt	Tailored	S-4XL	14.5/15 - 19.5" **	1/12	●	●																
R-934M-0	29	Men's Long Sleeve PolyCotton Easy Care Poplin Shirt	Classic	S-4XL	14.5/15 - 19.5" **	1/12	●	●																
R-935M-0	29	Men's Short Sleeve PolyCotton Easy Care Poplin Shirt	Classic	S-4XL	14.5/15 - 19.5" **	1/12	●	●																
R-924F-0	31	Ladies' Long Sleeve PolyCotton Easy Care Fitted Poplin Shirt	Fitted	XS-4XL	N/A	1/12	●	●																
R-925F-0	31	Ladies' Capped Sleeve PolyCotton Easy Care Fitted Poplin Shirt	Fitted	XS-4XL	N/A	1/12	●	●																
R-926F-0	31	Ladies' 3/4 Sleeve PolyCotton Easy Care Fitted Poplin Shirt	Fitted	XS-4XL	N/A	1/12	●	●																
R-934F-0	29	Ladies' Long Sleeve PolyCotton Easy Care Poplin Shirt	Classic	S-4XL	N/A	1/12	●	●																
R-935F-0	29	Ladies' Short Sleeve PolyCotton Easy Care Poplin Shirt	Classic	S-4XL	N/A	1/12	●	●																

Shirts (Continued)

Fabric Type/Style	Page No.	Fabric & Weight/Style	Fit	Sizes	Collar (Ins)	Packs/Cartons	30 White	36 Black	BN Bright Pink	BZ Bright Sky	CR Classic Red	CQ Chocolate (Collection)	NA Navy (Collection)	PT Port	ZT Aztec Blue
100% Cotton Poplin Shirt		100% Cotton Poplin 120/125g/m²													
R-936M-0	33	Men's Long Sleeve Pure Cotton Easy Care Poplin Shirt	Classic	S-4XL	14.5 - 19.5***	1/12	●	●							
R-937M-0	33	Men's Short Sleeve Pure Cotton Easy Care Poplin Shirt	Classic	S-4XL	14.5 - 19.5***	1/12	●	●							
R-936F-0	33	Ladies' Long Sleeve Pure Cotton Easy Care Poplin Shirt	Classic	XS-4XL	N/A	1/12	●	●							
R-937F-0	33	Ladies' Short Sleeve Pure Cotton Easy Care Poplin Shirt	Classic	XS-4XL	N/A	1/12	●	●							
Fitted Stretch Shirt		97% Cotton/3% Elastane Poplin 140g/m²													
R-946M-0	35	Men's Long Sleeve Easy Care Fitted Shirt	Fitted	S-4XL	14.5 - 19.5***	1/12	●	●							
R-947M-0	35	Men's Short Sleeve Easy Care Fitted Shirt	Fitted	S-4XL	14.5 - 19.5***	1/12	●	●							
R-946F-0	35	Ladies' Long Sleeve Easy Care Fitted Shirt	Fitted	XS-2XL	N/A	1/12	●	●							
R-947F-0	35	Ladies' Short Sleeve Easy Care Fitted Shirt	Fitted	XS-2XL	N/A	1/12	●	●							
Corporate Tencel Shirt		67% Tencel® Lyocell/33% Cotton Poplin 130g/m²													
R-952M-0	37	Men's Long Sleeve Tencel® Corporate Shirt	Classic	S-4XL	14.5 - 19.5**	1/12	●	●							
R-953M-0	37	Men's Short Sleeve Tencel® Corporate Shirt	Classic	S-4XL	14.5 - 19.5**	1/12	●	●							
R-952F-0	37	Ladies' Long Sleeve Tencel® Corporate Shirt	Fitted	XS-4XL	N/A	1/12	●	●							
R-953F-0	37	Ladies' 3/4 Sleeve Tencel® Corporate Shirt	Fitted	XS-4XL	N/A	1/12	●	●							
Fitted Tencel Shirt		54% Cotton/46% Tencel® Lyocell Twill 136g/m²													
R-954M-0	39	Men's Long Sleeve Tencel® Fitted Shirt	Fitted	S-4XL	14.5 - 19.5***	1/12	●	●							
R-955M-0	39	Men's Short Sleeve Tencel® Fitted Shirt	Fitted	S-4XL	14.5 - 19.5***	1/12	●	●							
R-954F-0	39	Ladies' 3/4 Sleeve Tencel® Fitted Shirt	Fitted	XS-2XL	N/A	1/12	●	●							
R-955F-0	39	Ladies' Cap Sleeve Tencel® Fitted Shirt	Fitted	XS-2XL	N/A	1/12	●	●							

*Shirt available in individual collar sizes (ins) ** Shirt available in dual collar sizes (ins) Please see Size Guide for more information

Stretch Tops

Fabric Type/Style	Page No.	Fabric & Weight/Style	Fit	Sizes	Packs/ Cartons	30 White	36 Black
Stretch Tops		90% Jersey Combed Cotton/10% Elastane 215/220g/m²					
R-990F-0	41	Sleeveless Stretch Top	Fitted	XS-4XL	1/36	●	●
R-991F-0	41	Short Sleeve Stretch Top	Fitted	XS-4XL	1/36	●	●
R-992F-0	41	3/4 Sleeve Stretch Top	Fitted	XS-4XL	1/36	●	●
R-993F-0	41	Long Sleeve Shirt Stretch Top	Fitted	XS-4XL	1/36	●	●

Knitwear

Category/Style	Page No.	Fabric & Weight/Style	Sizes	Packs/ Cartons	36 Black	FN French Navy
Knitwear		50% Cotton/50% Acrylic Cottonblend™ 12 gauge 275g/m²				
R-710M-0	45	Men's V-Neck Knitted Pullover	XXS-4XL	1/12	●	●
R-710F-0	45	Ladies' V-Neck Knitted Pullover	XXS-4XL	1/12	●	●
R-715F-0	47	Ladies' V-neck Knitted Cardigan	XXS-4XL	1/12	●	●
R-716M-0	47	V-Neck Sleeveless Knitted Pullover	XXS-4XL	1/12	●	●

T-shirts

Fabric Type/Style	Page No.	Fabric & Weight/ Style	Sizes	Packs/Cartons	30 White	36 Black	38 Bottle Green	41 Burgundy	44 Orange	57 Fuchsia	65 Turquoise	81 Purple	AL Apple	BH Bright Royal	BI Birch	BR Bright Red	CD Candy Pink	CG Convo Grey	CR Classic Red	FN French Navy	GY Grey Marl	G5 Green Marl	K2 Yellow	LM Lime	LX Light Oxford	M3 Blue Marl	PD Pure Gold	PZ Purple Marl	RM Red Marl	SC Sky	S7 Silver Marl	WL Winter Emerald	ZU Azure Blue	2P Pink Marl	2Y Yellow Marl	3C Coral Marl
HD T		65% Polyester/35% Ringspun Combed Cotton 155/160g/m²																																		
R-165M-0	53	Men's HD T	XS-2XL	6/36	●																															
R-165F-0	53	Ladies' HD T	XS-XL	6/36	●																															
Slim T		100% Ringspun Cotton 140/145g/m²																																		
R-155M-0	55	Men's Slim T	S-2XL	10/100	●																															
R-155F-0	55	Ladies' Slim T	XS-XL	10/100	●																															
Lightweight T-shirt		100% Combed Ring Spun Cotton 140/145g/m²																																		
R-150M-0	57	Lightweight T-shirt	S-2XL	10/100	●																															
R-150B-0	57	Children's Lightweight T-shirt	1-12 years	10/100	●																															
Classic T-shirt		100% Ring Spun Cotton, Fine Gauge Knit 175/180g/m²																																		
R-180M-0	58	Classic T-shirt	XS-4XL	12/72	●																															
R-180B-0	58	Children's Classic T-shirt	1-12 years	12/72	●																															
Classic Heavyweight T-shirt		100% Combed Ring Spun Cotton 210/215g/m²																																		
R-215M-0	59	Classic Heavyweight T-shirt	S-2XL	12/72	●																															
Heavy Duty T-shirt		100% Combed Ring Spun Cotton 180g/m²																																		
R-010M-0	59	Heavy Duty T-shirt	XS-4XL	3/36	●																															
Ladies Fitted T-shirt		93% Cotton/7% Elastane 215/220g/m²																																		
R-310F-0	60	Ladies' Fitted T-shirt	XS-XL	6/36	●																															

Polos

Fabric Type/Style	Page No.	Fabric & Weight/ Style	Sizes	Packs/Cartons	30 White	36 Black	38 Bottle Green	41 Burgundy	44 Orange	57 Fuchsia	65 Turquoise	81 Purple	AL Apple	BH Bright Royal	BR Bright Red	CC Cactus Green	CD Candy Pink	CG Convo Grey	CR Classic Red	FN French Navy	K2 Yellow	LM Lime	LX Light Oxford	PD Pure Gold	SC Sky	TT Titanium	WL Winter Emerald	Y1 Classic Pink	ZU Azure Blue	3P Ultra Purple
Stretch Polo		95% Cotton/5% Lycra® 205/210g/m²																												
R-566M-0	65	Stretch Polo	XS-3XL	6/36	●	●																								
R-566F-0	65	Ladies' Stretch Polo	XS-2XL	6/36	●	●																								
Classic PolyCotton Polo		65% Polyester/35% Ringspun Cotton Pique 210/215g/m²																												
R-539M-0	67	Men's Classic Polycotton Polo	XS-6XL	6/72	●	●																								
R-539F-0	67	Ladies' Classic Polycotton Polo	XS-4XL	6/36	●	●																								
R-539B-0	67	Children's Classic Polycotton Polo	1-12 years	6/72	●	●																								
Ultimate Cotton Polo		100% Combed Ring Spun Cotton 210/215g/m²																												
R-577M-0	69	Men's Ultimate Cotton Polo	XS-4XL	6/36	●	●																								
R-577F-0	69	Ladies' Ultimate Cotton Polo	XS-2XL	6/36	●	●																								
Classic Cotton Polo		100% Ring Spun Cotton Pique 195/200g/m²																												
R-569M-0	71	Men's Classic Cotton Polo	XS-4XL	6/36	●	●																								
R-569F-0	71	Ladies' Classic Cotton Polo	XS-2XL	6/36	●	●																								
R-569L-0	71	Long Sleeve Classic Cotton Polo	XS-2XL	6/36	●	●																								
Pima Cotton Polo		100% Pima Cotton 180/185g/m²																												
R-588M-0	73	Men's Pima Cotton Polo	XS-2XL	3/24	●	●																								
R-588F-0	73	Ladies' Pima Cotton Polo	XS-2XL	3/24	●	●																								
Hardwearing Cotton Polo		65% Polyester/35% Ringspun Cotton Pique 210/215g/m²																												
R-599M-0	75	Adult Hardwearing PolyCotton Polo	XS-6XL	6/36	●	●																								
R-599B-0	75	Children's Hardwearing PolyCotton Polo	3-12 years	6/36	●	●																								
Heavy Duty Cotton Polo		100% Ring Spun Cotton Pique 215g/m²																												
R-011M-0	76	Heavy Duty Cotton Polo	XS-4XL	3/36	●	●																								

Sweatshirts/Sweat Pants

Fabric Type/Style	Page No.	Fabric & Weight/Style	Sizes	Packs/Cartons	30 White	36 Black	38 Bottle Green	41 Burgundy	44 Orange	57 Fuchsia	65 Turquoise	81 Purple	AL Apple	BH Bright Royal	BR Bright Red	CD Candy Pink	CG Convo Grey	CR Classic Red	FN French Navy	K2 Yellow	LM Lime	LX Light Oxford	SC Sky	WL Winter Emerald
Authentic Sweatshirt		80% Combed Ring Spun Cotton/20% Polyester (3 layer fabric) 280g/m²																						
R-262M-0	81	Authentic Sweatshirt	XS-3XL	6/36																				
R-265M-0	83	Men's Authentic Hooded Sweat	XS-3XL	3/24	•																			
R-265F-0	83	Ladies' Authentic Hooded Sweat	XS-XL	3/24	•																			
R-266M-0	83	Men's Authentic Zipped Hood	XS-3XL	3/24																				
R-266F-0	83	Ladies' Authentic Zipped Hood	XS-XL	3/24																				
Classic Sweatshirt		50% Combed Ring Spun Cotton/50% Polyester 295g/m²																						
R-762M-0	85	Classic Sweatshirt	XS-4XL	6/36																				
R-762B-0	85	Children's Classic Sweatshirt	1-12 years	6/36																				
V-Neck Sweatshirt		50% Combed Ring Spun Cotton/50% Polyester 295g/m²																						
R-272M-0	87	V-Neck Sweatshirt	XS-2XL	3/36																				
R-272B-0	87	Children's V-Neck Sweatshirt	3-12 years	3/36																				
Sweatshirt Cardigan		50% Combed Ring Spun Cotton/50% Polyester 295g/m²																						
R-273M-0	87	Sweatshirt Cardigan	XS-XL	3/24																				
R-273B-0	87	Children's Sweatshirt Cardigan	3-12 years	3/24																				
Hooded Sweatshirt		50% Combed Ring Spun Cotton/50% Polyester 295g/m²																						
R-575M-0	89	Hooded Sweatshirt	XS-2XL	6/24	•																			
R-575B-0	89	Children's Hooded Sweatshirt	3-12 years	6/24	•																			
Heavy Duty Sweatshirt		80% Combed Ring Spun Cotton/20% Polyester 300g/m²																						
R-012M-0	91	Heavy Duty Collar Sweatshirt	XS-4XL	3/24																				
R-013M-0	91	Heavy Duty Crew Neck Sweatshirt	XS-4XL	3/24																				
Sweat Pants		50% Combed Ring Spun Cotton/50% Polyester 295g/m²																						
R-750M-0	90	Sweat Pants	S-XL	6/36																				
R-750B-0	90	Children's Sweat Pants	3-12 years	6/36																				

Fleeces

Fabric Type/Style	Page No.	Fabric & Weight/Style	Sizes	Packs/Cartons	36 Black	38 Bottle Green	41 Burgundy	BH Bright Royal	CG Convo Grey	CR Classic Red	FN French Navy
Outdoor Fleece		100% Polyester Anti-Pill Fleece 320g/m²									
R-870M-0	95	Men's Full Zip Outdoor Fleece	XS-4XL	3/24							
R-870F-0	95	Ladies' Full Zip Outdoor Fleece	XS-2XL	3/24							
R-870B-0	95	Children's Full Zip Outdoor Fleece	3-12 years	3/24							
R-874M-0	95	Men's Quarter Zip Outdoor Fleece	XS-2XL	3/24							
R-874B-0	95	Children's Quarter Zip Outdoor Fleece	3-12 years	3/24							
R-872M-0	97	Men's Outdoor Fleece Gilet	XS-2XL	3/24							
R-872F-0	97	Ladies' Outdoor Fleece Gilet	XS-2XL	3/24							
Microfleece		100% Polyester Anti-Pill Microfleece 190g/m²									
R-880M-0	99	Men's Fitted Full Zip Microfleece	XS-2XL	3/24							
R-881M-0	99	Quarter Zip Microfleece	S-2XL	3/24							
R-883F-0	99	Ladies' Fitted Full Zip Microfleece	XS-XL	3/24							

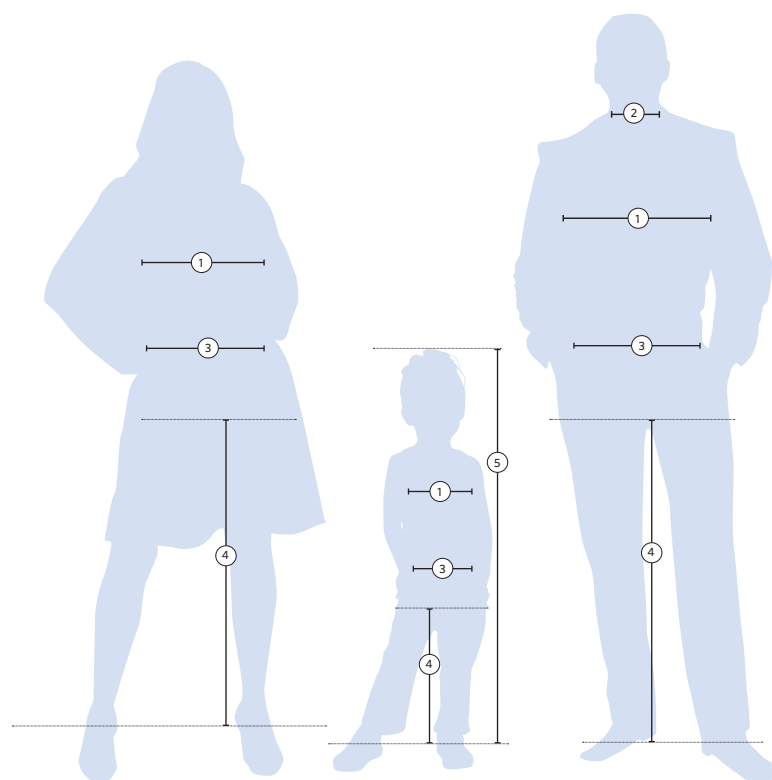
Trousers & Shorts

Category/Style	Page No.	Fabric & Weight/Style	Sizes	Packs/Cartons	36 Black	38 Bottle Green	CG Convo Grey	FN French Navy
Heavy Duty Trousers		65% Polyester/35% Cotton hardwearing canvas 260g/m²						
R-015M-0	125	Heavy Duty Trousers	See guidelines	1/12				
Polycotton Twill Trousers		65% Polyester/35% Cotton Twill 245g/m²						
R-001M-0	127	Polycotton Twill Trousers	See guidelines	1/12				
Polycotton Twill Shorts		65% Polyester/35% Cotton Twill 245g/m²						
R-002M-0	127	Polycotton Twill Shorts	See guidelines	1/12				

Jackets

Fabric Type/Style	Page No.	Fabric & Weight/Style	Sizes	Packs/Cartons	36 Black	38 Bottle Green	41 Burgundy	BH Bright Royal	CC Cactus Green	CG Conway Grey	CR Classic Red	DN Dark Green	FN French Navy	MA Maroon	NA Navy (Blazers)	TT Titanium	ZU Azure Blue
SoftShell		92% Polyester/8% Elastane, 3 layer softshell fabric 340g/m²															
R-140M-0	105	Men's SoftShell Jacket	XS-4XL	1/12	●												
R-140F-0	105	Ladies' SoftShell Jacket	XS-4XL	1/12	●												
R-140B-0	105	Children's SoftShell Jacket	3-12 years	1/12	●												
R-141M-0	107	Men's SoftShell Gilet	XS-2XL	1/12	●												
R-141F-0	107	Ladies' SoftShell Gilet	XS-2XL	1/12	●												
Smart SoftShell		100% polyester knitted softshell outer layer, bonded microfleece inner layer 315g/m²															
R-040M-0	109	Men's Smart SoftShell Jacket	XS-3XL	1/12	●												
R-040F-0	109	Ladies' Smart SoftShell Jacket	XS-3XL	1/12	●												
R-041M-0	109	Men's Smart SoftShell Gilet	XS-3XL	1/12	●												
R-041F-0	109	Ladies' Smart SoftShell Gilet	XS-3XL	1/12	●												
Sports Shell		Advanced softshell fabric with natural stretch; 3 layer bonded hydrophobic substrate; 100% Polyester outer; 100% Polyester knitted liner 250g/m²															
R-520M-0	111	Men's Sport Shell 5000 Jacket	XS-2XL	1/12	●												
R-520F-0	111	Ladies' Sport Shell 5000 Jacket	XS-2XL	1/12	●												
Hydra Shell 2000 Jacket		100% Nylon Ripstop 140g/m²															
R-500M-0	113	Hydra Shell 2000 Jacket	XS-2XL	1/12	●												
Hydra Plus 2000 Jacket		100% Nylon Taslan 190g/m²															
R-510M-0	115	Hydra Plus 2000 Jacket	XS-4XL	1/12	●												
R-510F-0	115	Hydra Plus 2000 Jacket	XS-4XL	1/12	●												
R-510B-0	115	Hydra Plus 2000 Jacket	3-12 years	1/12	●												
Workwear SoftShell		96% Polyester/4% Elastane durable outer fabric with abrasion resistant textured finish; breathable, waterproof membrane; bonded microfleece lining (100% Polyester with grid texture) 400g/m²															
R-018M-0	117	Workwear SoftShell Jacket	XS-4XL	1/12	●												
Heavy Duty Gilet		65% Polyester/35% Cotton hardwearing canvas with 5oz polyester wadding and 100% polyester inner lining 260g/m²															
R-014M-0	119	Heavy Duty Gilet	XS-4XL	1/12	●												
Classic Blazer		100% Polyester Twill with Du Pont™ Teflon® fabric protector finish 100% polyester lining 200g/m²															
R-700M-0	121	Boy's Classic Blazer	See guide	1/12	●												
R-700F-0	121	Girls' Classic Blazer	See guide	1/12	●												
Reversible Jacket		100% woven Polyester on one side/100% Polyester Anti-Pill Fleece on reverse 370g/m²															
R-875B-0	122	Reversible Jacket	See guide	3/24	●												

SIZE GUIDE



All of our measurements are based on actual “To Fit” body sizes and not the size of the actual garment itself e.g. a polo shirt with a chest to fit size of 92-97cms / 36-38” will fit someone with similar chest measurements; trousers with a waist to fit of 50 Europe / 34” will fit someone with similar waist measurements etc.

To help you select the most appropriate size of garment(s) please refer to our measuring tips below.

Chest

Men: measure around the fullest part of the chest, 2.5cms below the underarm area ①

Women: measure around the fullest part of the bust ①

Children: measure under the arms around the fullest part of the chest ①

Collar

Men: measure around the base of the neck ②

Waist

All: measure around the natural waist, ensuring the measuring tape is kept taut ③

Leg Length

All: measure from the top of the inside leg at the crotch down to where trousers are normally worn with shoes ④

Height

Children: standing still, with feet together and flat on the floor, measure from the top of the head to the ground ⑤

All Products (excl. Shirts, Trousers, Shorts & Sweatpants)

Ladies'	XXS	XS	S	M	L	XL	2XL	3XL	4XL	5XL	6XL
Chest to fit (CM)	72-77	77-82	82-87	87-92	92-97	97-102	102-107	107-112	112-117	117-122	122-127
Chest to fit (INS)	28-30	30-32	32-34	34-36	36-38	38-40	40-42	42-44	44-46	46-48	48-50

Dress Size

UK	6	8	10	12	14	16	18	20	22	24	26
France	34	36	38	40	42	44	46	48	50	52	54
Italy	38	40	42	44	46	48	50	52	54	56	58
Germany/Europe	32	34	36	38	40	42	44	46	48	50	52

Men's	XXS	XS	S	M	L	XL	2XL	3XL	4XL	5XL	6XL
Chest to fit (CM)	82-87	87-92	92-97	97-102	102-107	107-112	112-117	117-122	122-127	127-132	132-137
Chest to fit (INS)	32-34	34-36	36-38	38-40	40-42	42-44	44-46	46-48	48-50	50-52	52-54

Shirts

Ladies'	XXS	XS	S	M	L	XL	2XL	3XL	4XL	5XL	6XL
Chest to fit (CM)	72-77	77-82	82-87	87-92	92-97	97-104	104-112	112-120	120-130	130-137	137-144
Chest to fit (INS)	28-30	30-32	32-34	34-36	36-38	38-41	41-44	44-47	47-51	51-54	54-57

Dress Size

UK	6	8	10	12	14	16	18	20	22	24	26
France	34	36	38	40	42	44	46	48	50	52	54
Italy	38	40	42	44	46	48	50	52	54	56	58
Germany/Europe	32	34	36	38	40	42	44	46	48	50	52

Men's	S		M		L		XL		2XL		3XL		4XL		5XL		6XL	
Collar to fit (CM)	37-38		39-40		41-42		43-44		45-46		47-48		49-50		51-52		53-54	
Dual Collar Sizes (INS)	14.5/15		15.5		16/16.5		17/17.5		18		18.5/19		19.5		20		21	
Individual Collar Sizes (INS)	14.5	15	15.5		16	16.5	17	17.5	18		18.5	19	19.5		20		21	
Chest to fit (CM)	92-97		97-102		102-107		107-112		112-117		117-122		122-127		127-132		132-137	
Chest to fit (INS)	36-38		38-40		40-42		42-44		44-46		46-48		48-50		50-52		52-54	

Trousers & Shorts

UK (INS)	28	30	32	34	36	38	40	42	44	46	48
EUROPE	44	46	48	50	52	54	56	58	60	62	64

	Short	Regular	Long
Leg Length (CM)	76	81	86
Leg Length (INS)	30	32	34

Sweatpants

	S	M	L	XL
UK (INS)	30	32	34	36
Europe	46	48	50	52

Blazers

Girls'

Chest to fit (CM)	68	71	73	76	79	81	84	86	89	91	96	101	106	112	117
Chest to fit (INS)	27	28	29	30	31	32	33	34	35	36	38	40	42	44	46

Boys'

Chest to fit (CM)	71	73	76	79	81	84	86	89	91	94	96	101	106	112	117	122
Chest to fit (INS)	28	29	30	31	32	33	34	35	36	37	38	40	42	44	46	48

All Children's Products (excl. Sweatpants)

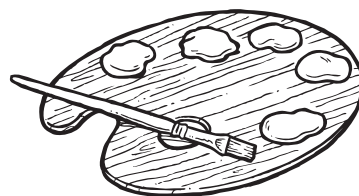
	XS	S	M	L	XL	2XL	3XL	4XL
Age (Years)	1-2	3-4	5-6	7-8	9-10	11-12	13-14	15-16
Height (CM)	90	104	116	128	140	152	164	176
Chest to fit (CM)	51-56	56-63	63-71	71-76	76-81	81-86	86-91	91-96
Chest to fit (INS)	20-22	22-25	25-28	28-30	30-32	32-34	34-36	36-38

Sweatpants (Children)

	S	M	L	XL	2XL
Age (Years)	3-4	5-6	7-8	9-10	11-12
Height (CM)	104	116	128	140	152
Waist to fit (CM)	53	55	58	61	66
Waist to fit (INS)	21	22	23	24	26



COLOUR PALETTE



Whether you're looking for formal shirts for corporate staff or eye-catching sweats and polos for an outdoor sales team, choosing the right colour is a key part of outfitting a consistently well-presented team. That's why we offer an extensive colour palette across our range of products.

Colour Palette

Pantone® references are an approximate shade match. There are many variables that can alter the fabrics shade in comparison to the paper shade of the Pantone® colour reference.

The colour chips included here are intended to give an indication of colour. Please note that due to variances in printing these should not be treated as 100% representative of the actual colours.

Colours correct as at
1st October 2014.

					
30 WHITE PANTONE® FABRIC: 11-0601 TPX PANTONE® PAPER: 7541 C C:0 M:0 Y:0 K:0	36 BLACK PANTONE® FABRIC: 19-4005 TPX PANTONE® PAPER: BLACK C C:100 M:50 Y:50 K:100	TT TITANIUM PANTONE® FABRIC: 19-3906 TPX PANTONE® PAPER: COOL GREY 11 C C:35 M:5 Y:0 K:85	XW ZINC PANTONE® FABRIC: 19-4104 TPX PANTONE® PAPER: 432 C C:45 M:12 Y:5 K:86	CG CONVOY GREY PANTONE® FABRIC: 17-4405 TPX PANTONE® PAPER: 444 C C:18 M:5 Y:0 K:71	GY GREY MARL PANTONE® FABRIC: 18-4005TPX PANTONE® PAPER: 424 C C:30 M:20 Y:19 K:60
					
CD CANDY PINK PANTONE® FABRIC: 14-2808 TPX PANTONE® PAPER: 217 C C:0 M:35 Y:5 K:0	2P PINK MARL PANTONE® FABRIC: 18-2133 TPX PANTONE® PAPER: 205 C C:0 M:82 Y:27 K:8	57 FUCHSIA PANTONE® FABRIC: 18-1856 TPX PANTONE® PAPER: 1935 C C:0 M:100 Y:7 K:0	RM RED MARL PANTONE® FABRIC: 17-1635TPX PANTONE® PAPER: 7418 EC C:8 M:84 Y:52 K:5	BR BRIGHT RED PANTONE® FABRIC: 18-1662 TPX PANTONE® PAPER: 1797 C C:0 M:100 Y:100 K:0	CR CLASSIC RED PANTONE® FABRIC: 19-1764 TPX PANTONE® PAPER: 1945 C C:0 M:100 Y:80 K:25
					
K2 YELLOW PANTONE® FABRIC: 13-0746 TPX PANTONE® PAPER: 129 C C:0 M:0 Y:80 K:0	2Y YELLOW MARL PANTONE® FABRIC: 12-0825 TPX PANTONE® PAPER: 1205 C C:0 M:4 Y:50 K:0	LM LIME PANTONE® FABRIC: 14-0446 TPX PANTONE® PAPER: 584 C C:25 M:0 Y:95 K:0	CC CACTUS GREEN PANTONE® FABRIC: 16-0439 TPX PANTONE® PAPER: 7495 C C:18 M:0 Y:100 K:51	38 BOTTLE GREEN PANTONE® FABRIC: 19-5513 TPX PANTONE® PAPER: 5477 C C:100 M:50 Y:80 K:45	DN DARK GREEN PANTONE® FABRIC: 19-4906 TPX PANTONE® PAPER: 5535 C C:100 M:0 Y:65 K:85
					
OD OXFORD BLUE PANTONE® FABRIC: 14-4214 TPX PANTONE® PAPER: 644 C C:35 M:17 Y:0 K:0	BL BLUE PANTONE® FABRIC: 16-4019 TPX PANTONE® PAPER: 645 C C:48 M:27 Y:0 K:0	M3 BLUE MARL PANTONE® FABRIC: 17-4041TPX PANTONE® PAPER: 279 EC C:45 M:14 Y:0 K:0	CP CORPORATE BLUE PANTONE® FABRIC: 16-4021 TPX PANTONE® PAPER: 652 C C:60 M:35 Y:0 K:5	ZT AZTEC BLUE PANTONE® FABRIC: 19-3950 TPX PANTONE® PAPER: 653 C C:80 M:40 Y:0 K:35	ZU AZURE BLUE PANTONE® FABRIC: 18-4141 TPX PANTONE® PAPER: 660 C C:100 M:53 Y:0 K:3